

湿重量計測用海藻類採取場所及び藻場撮影場所

三津浦第1工区 駆除区

面積:16,617m²

三津浦第1工区 駆除区

N 42° 56.454'
E 144° 28.004'
X=-117349.409
Y=17364.203

N 42° 56.442'
E 144° 28.094'
X=-117371.314
Y=17486.648

育成調査実施位置①

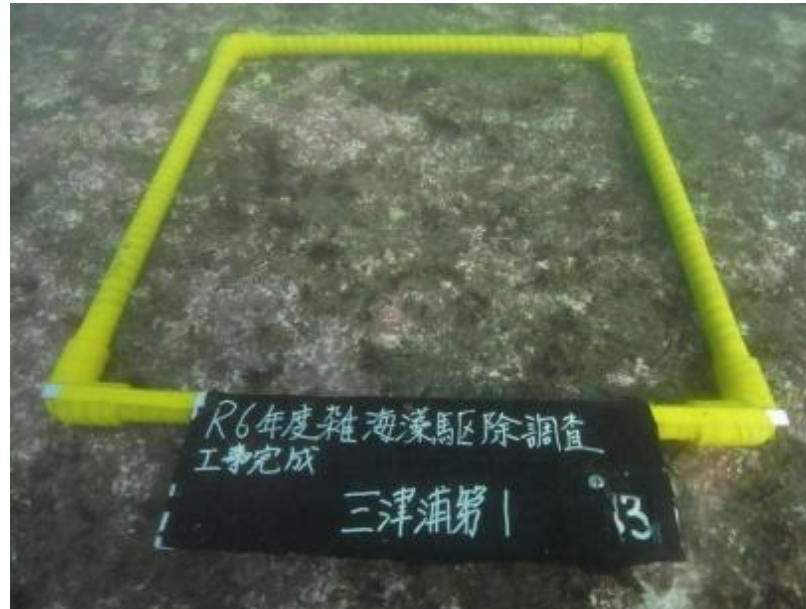
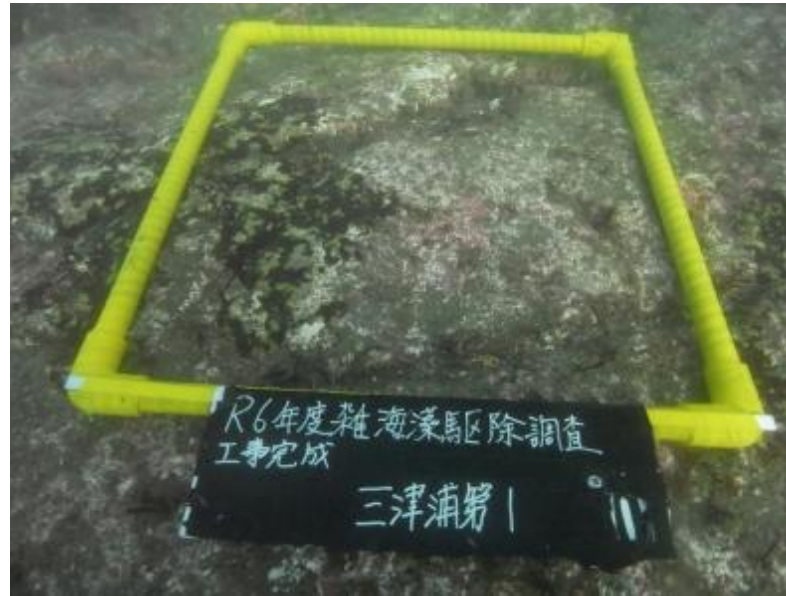
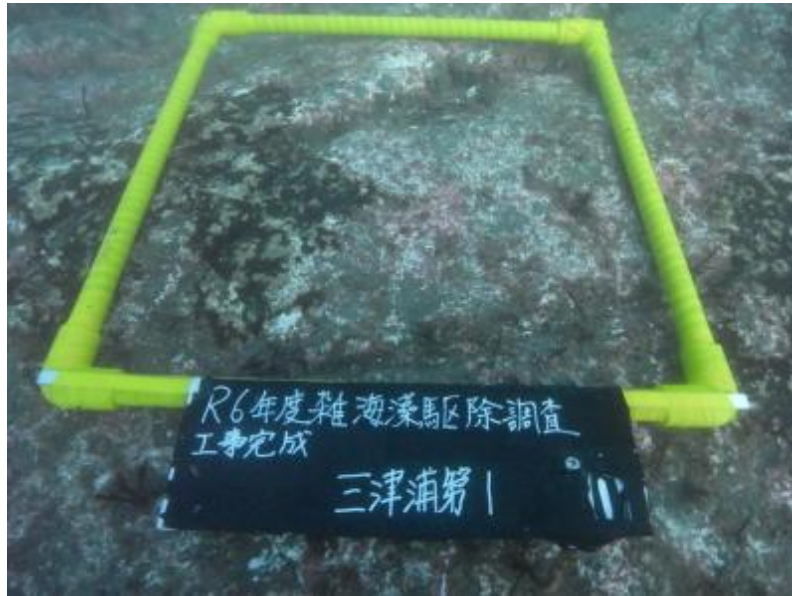
育成調査実施位置②

N 42° 56.381'
E 144° 27.970'
X=-117484.674
Y=17318.300

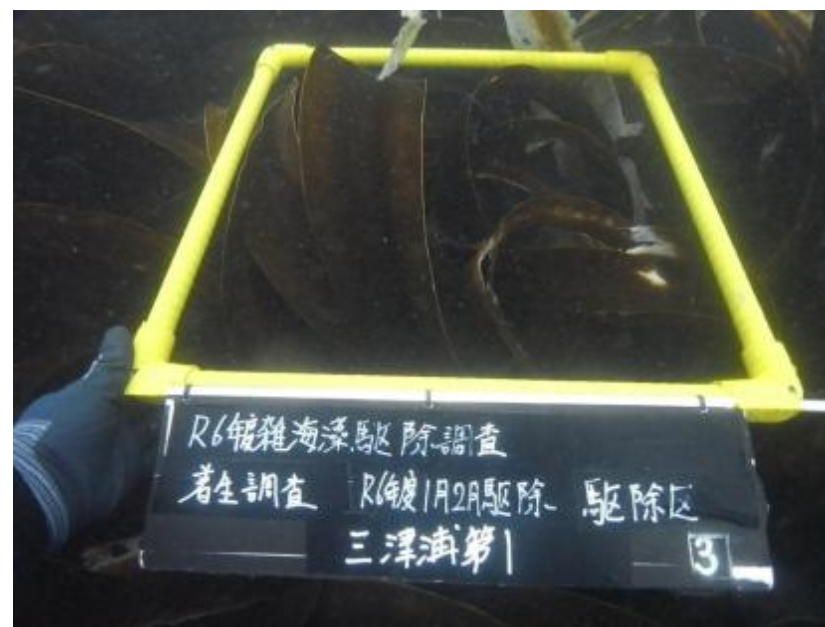
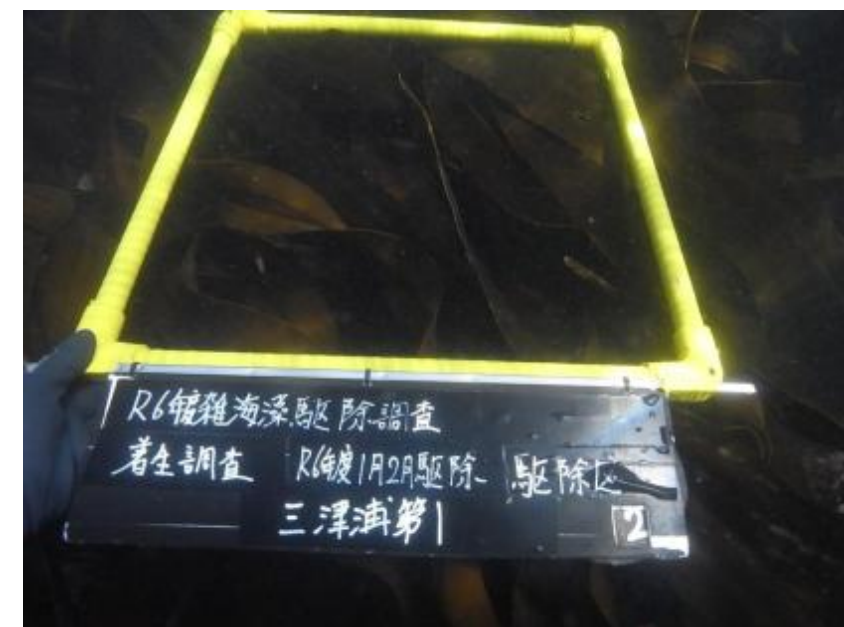
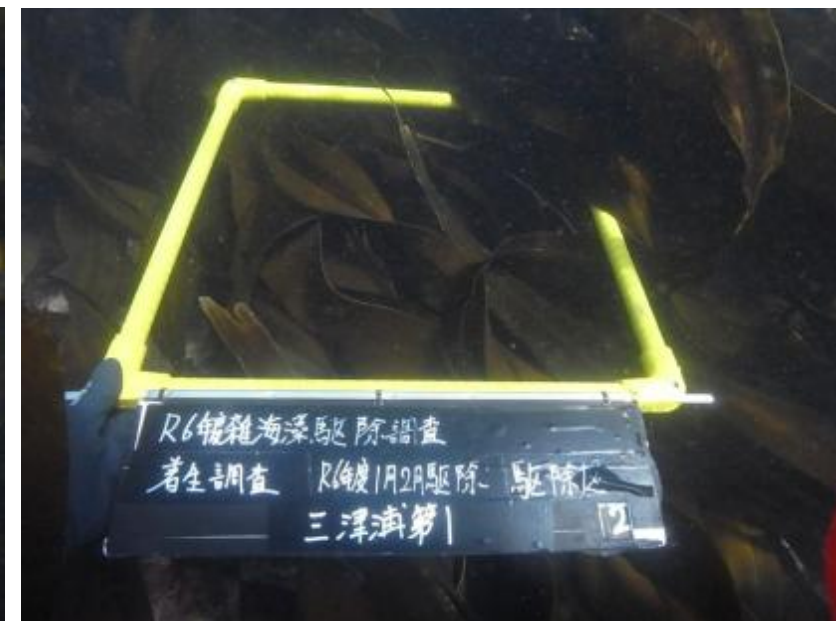
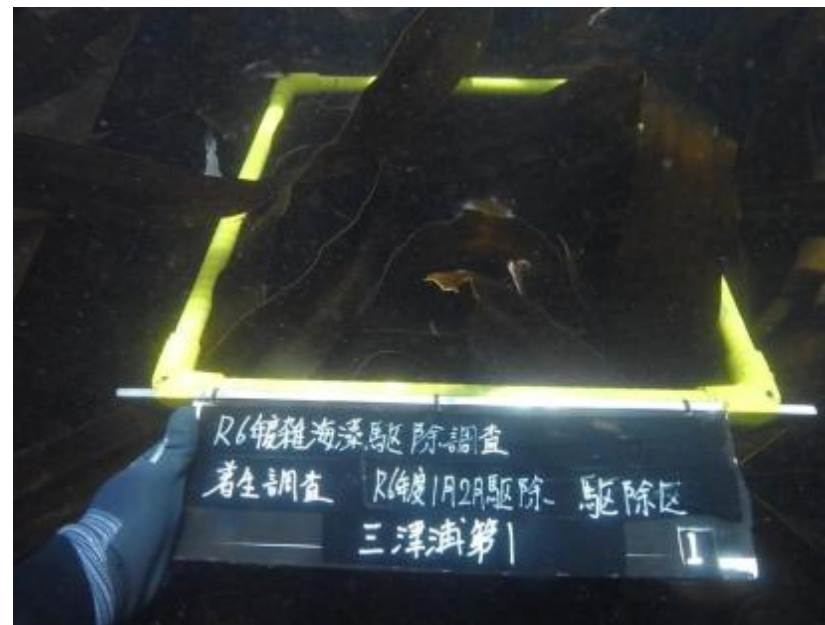
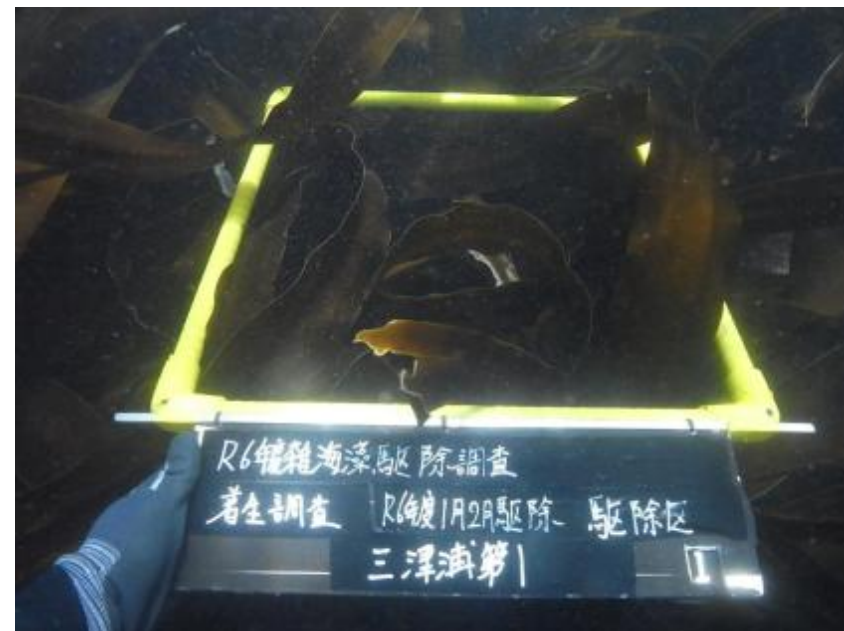
N 42° 56.380'
E 144° 28.070'
X=-117486.150
Y=17454.297

A=16,617m²

三津浦第1工区 駆除区 Before 2025. 2.11



三津浦第1工区 駆除区 After 2025. 8.24



三津浦第1工区 对照区

面積: 15,129m²

三津浦第1工区 对照区

N 42° 56.477'
E 144° 27.865'
X=-117307.335
Y=17175.062

N 42° 56.478'
E 144° 27.911'
X=-117305.296
Y=17237.600

育成調査実施位置①



育成調査実施位置②

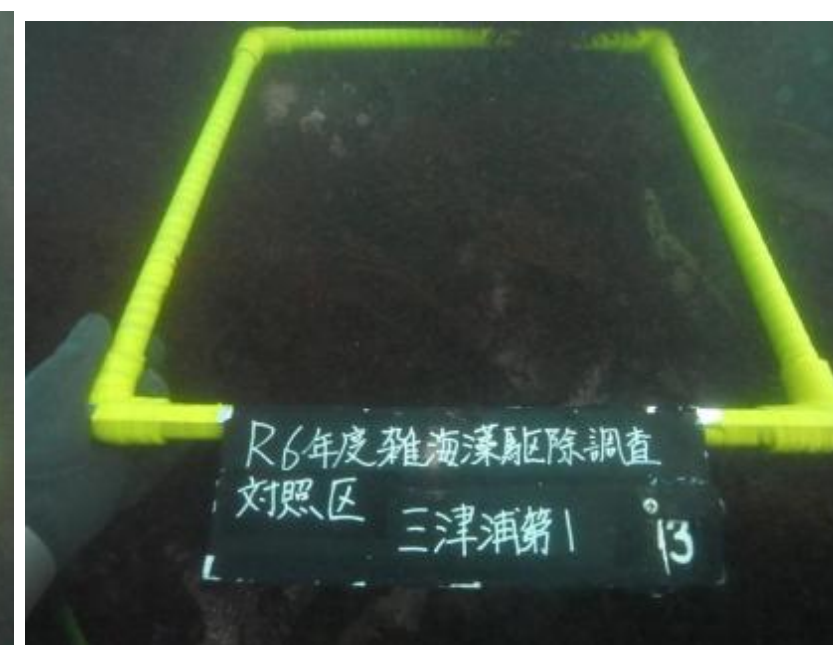
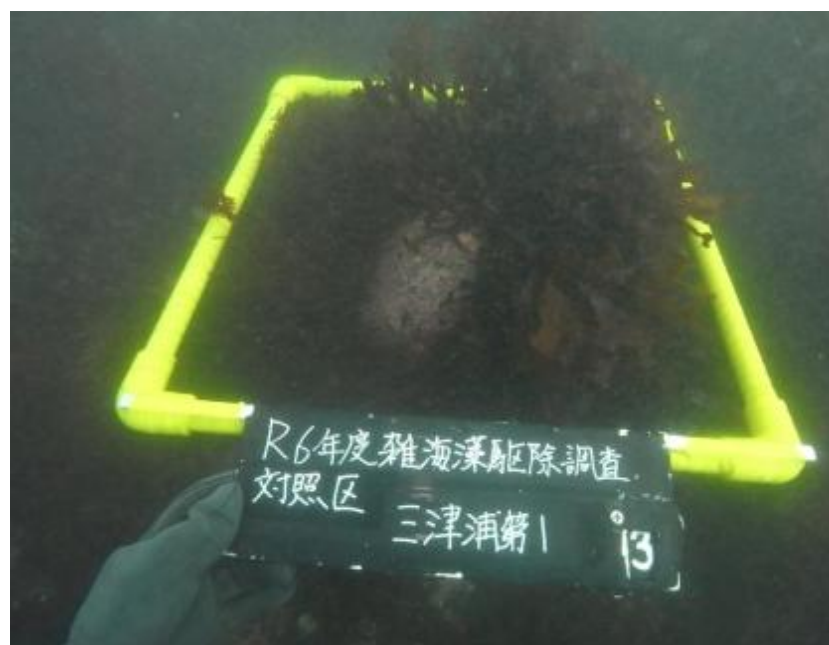
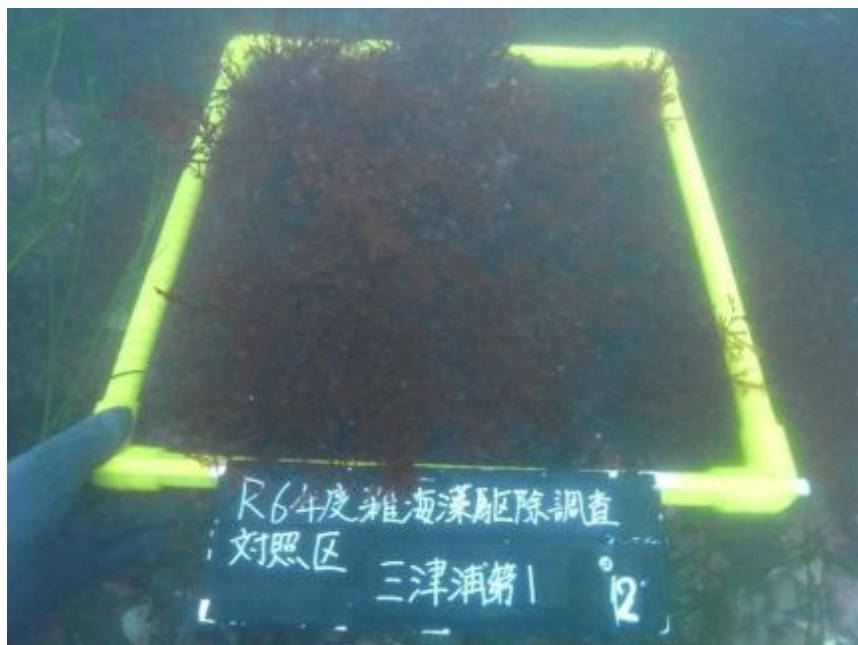
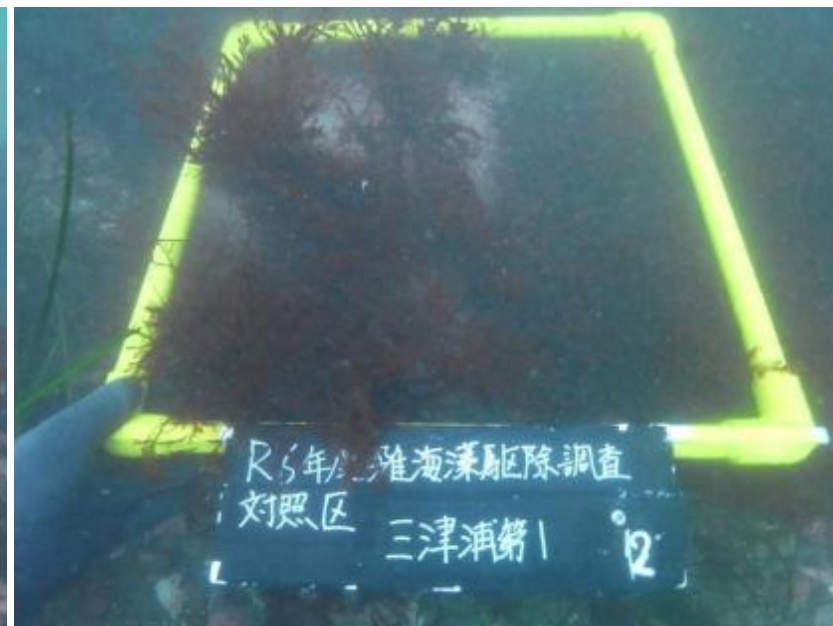


N 42° 56.353'
E 144° 27.858'
X=-117536.894
Y=17166.115

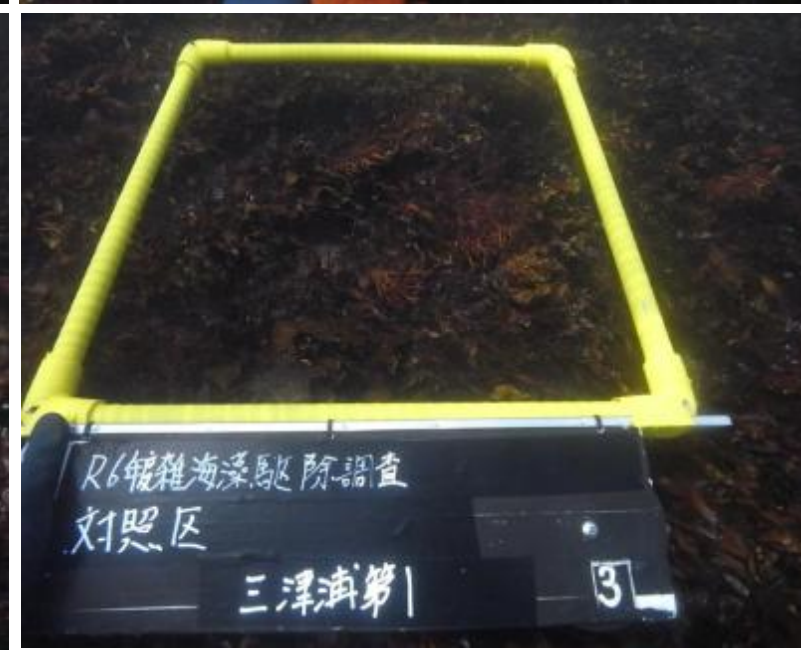
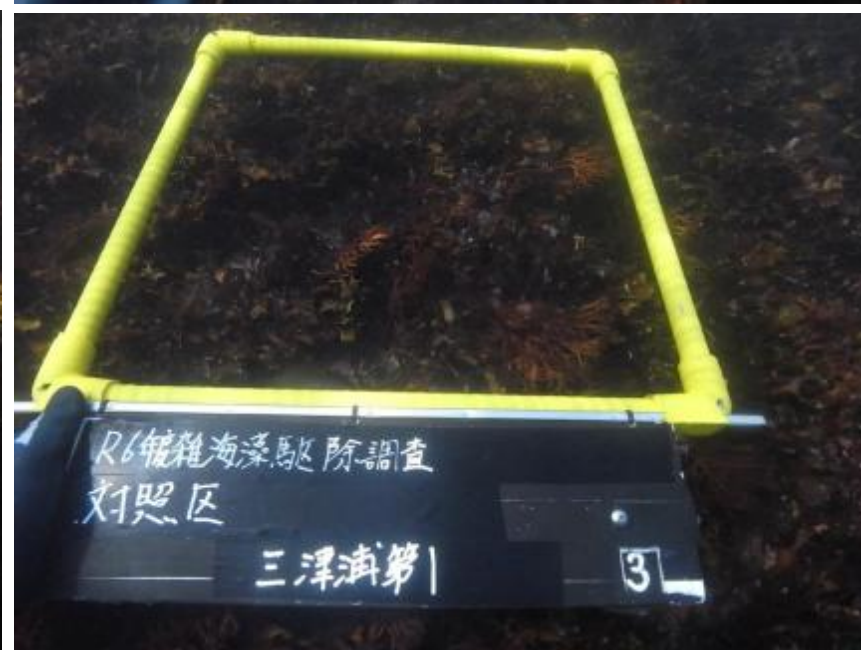
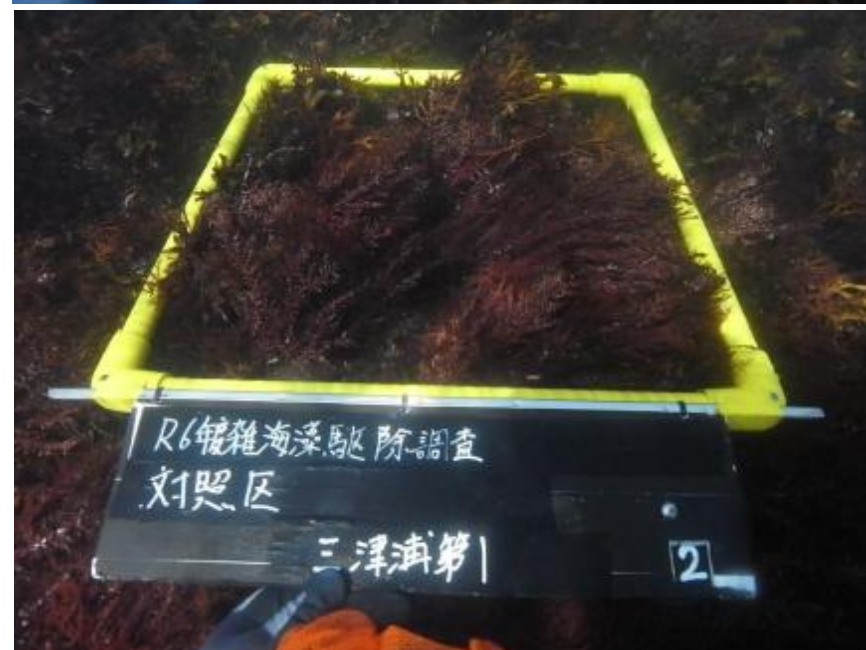
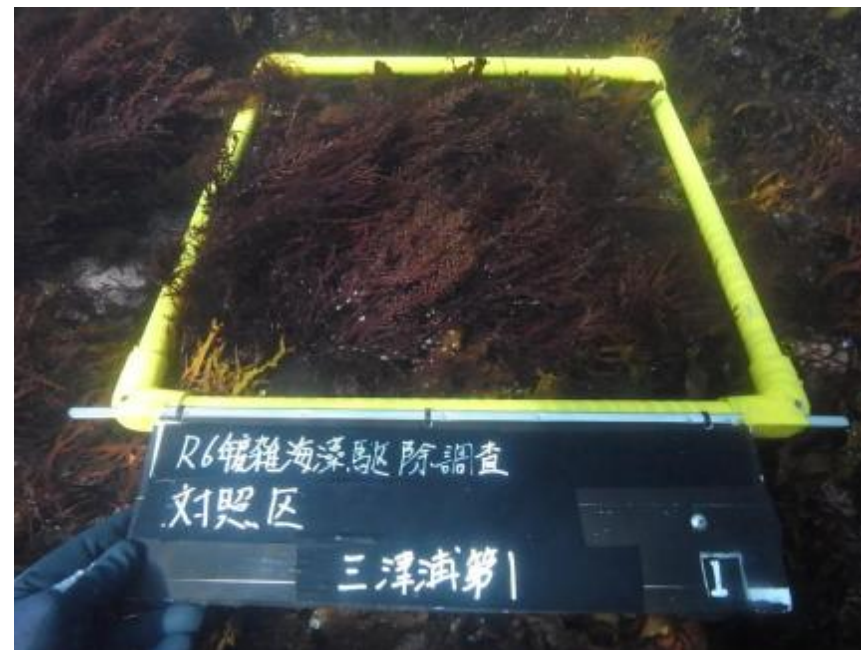
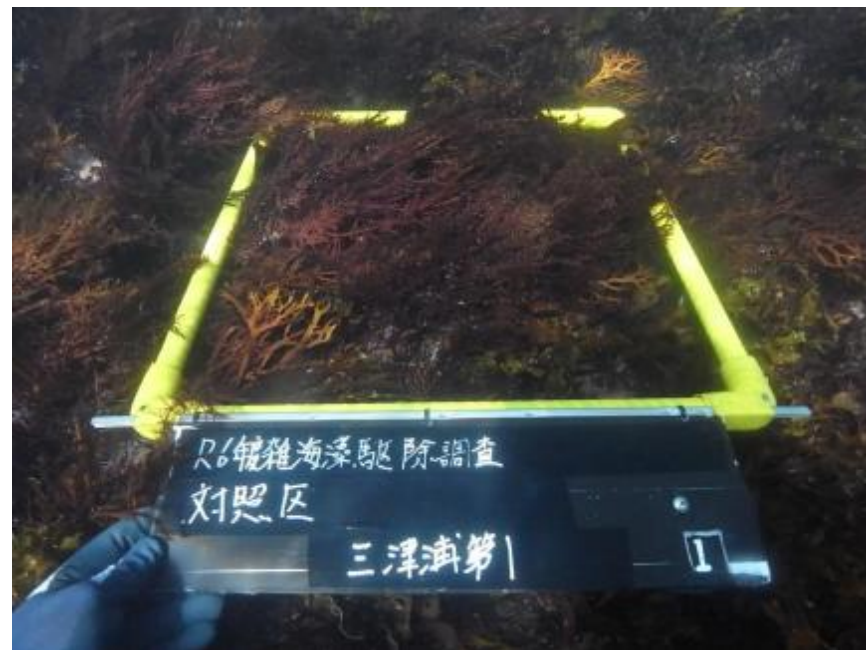
N 42° 56.354'
E 144° 27.909'
X=-117534.869
Y=17235.479

A=15,129m²

三津浦第1工区 对照区 Before 2025.2.11



三津浦第1工区 对照区 After 2025. 8.24



三津浦第2工区 駆除区

面積: 17,150m²

三津浦第2工区 駆除区

N 42° 56.244'
E 144° 29.220'
X=-117733.684
Y=19019.012

N 42° 56.183'
E 144° 29.228'
X=-117846.586
Y=19030.207

N 42° 56.202'
E 144° 29.350'
X=-117805.288
Y=19200.823

N 42° 56.158'
E 144° 29.362'
X=-117886.702
Y=19217.374

育成調査実施位置①

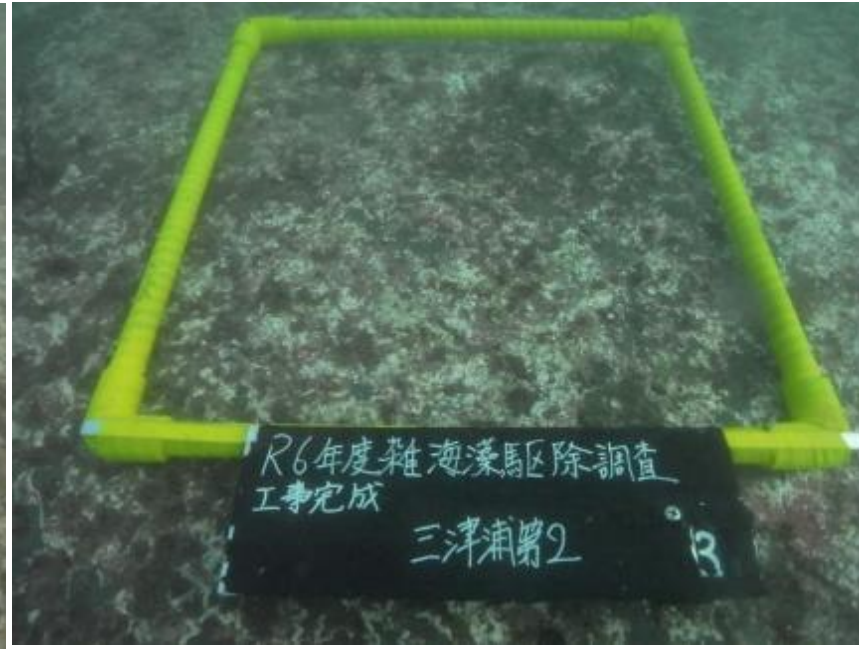
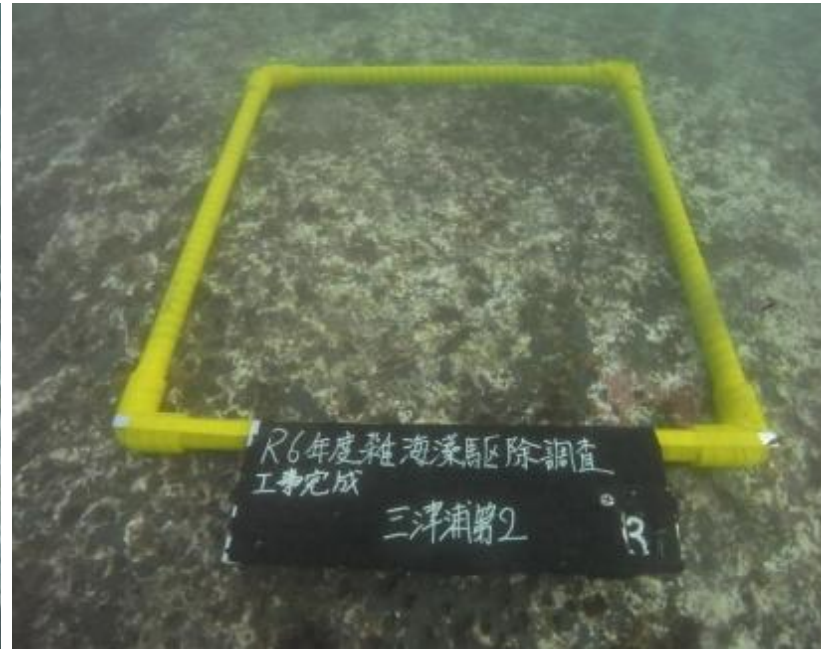
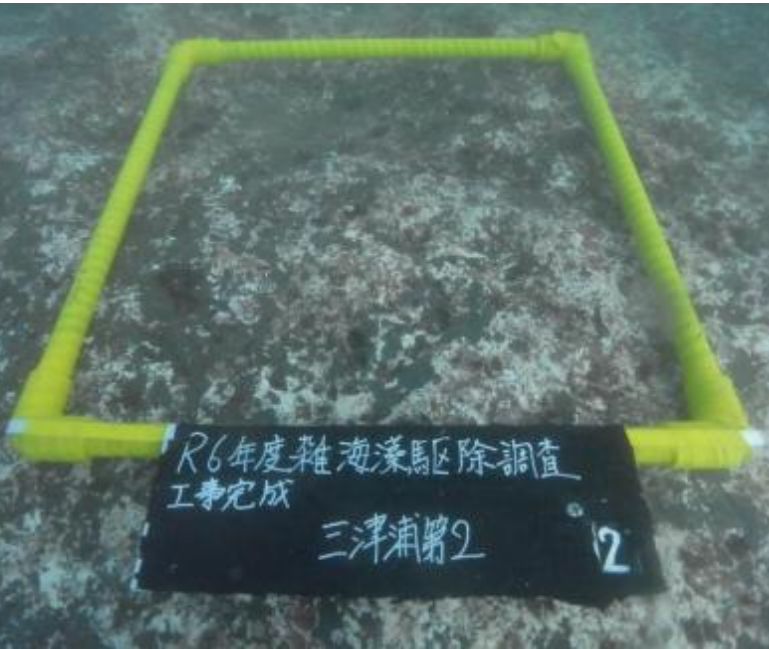
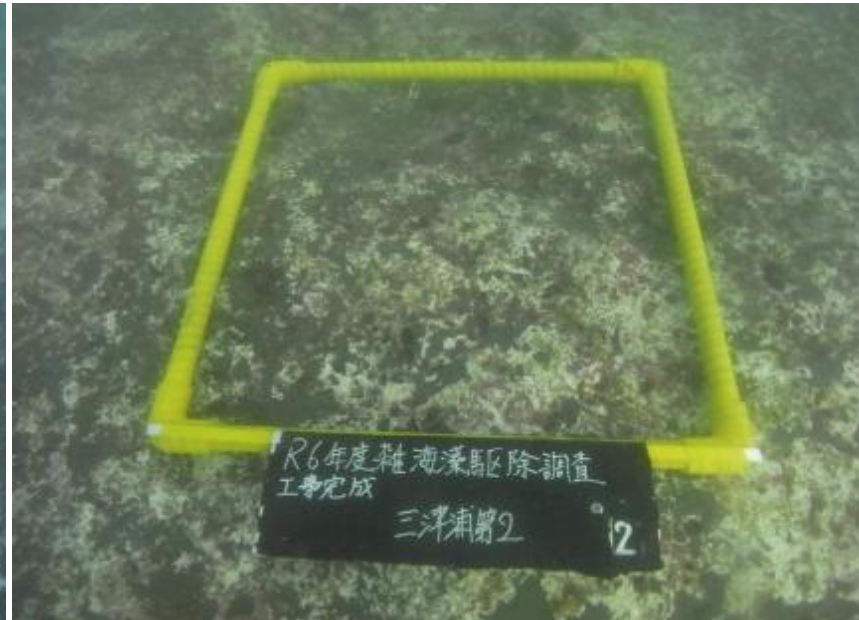
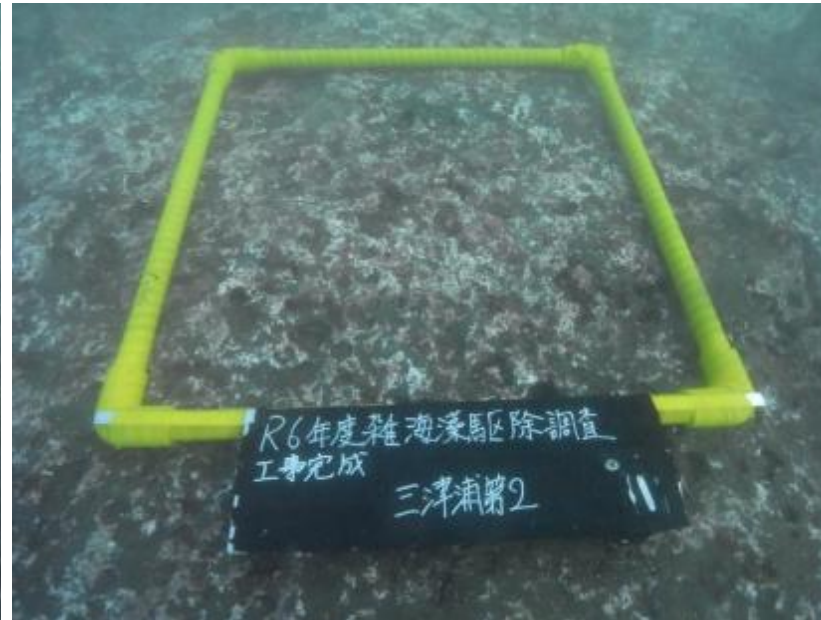
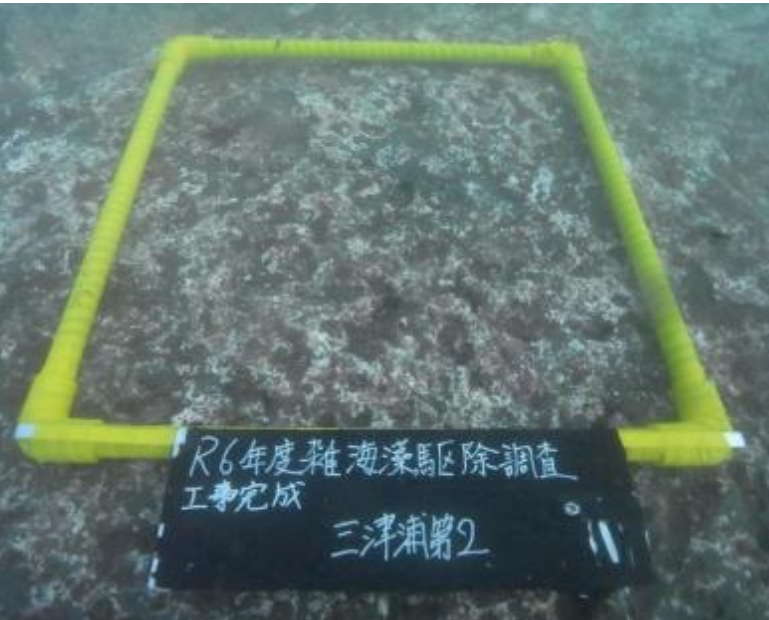


育成調査実施位置②

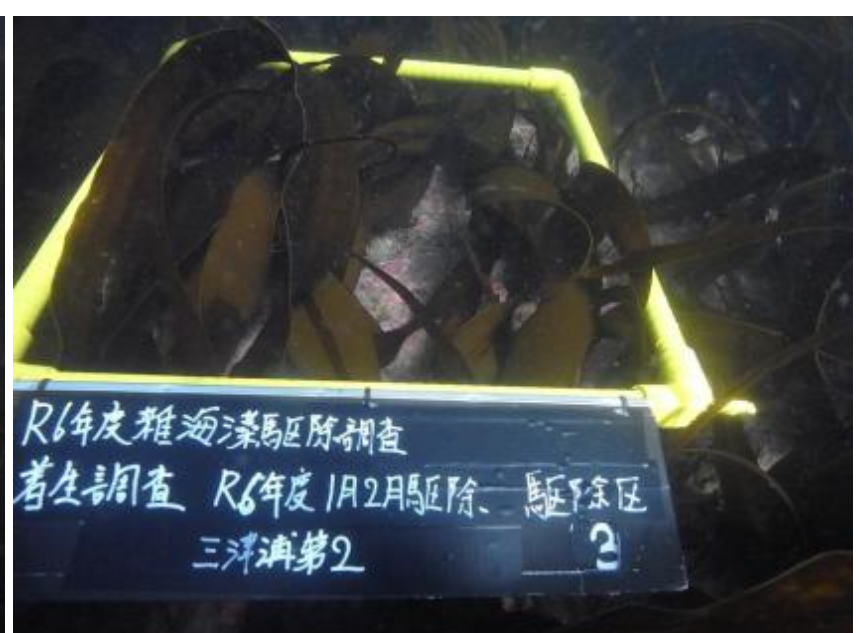
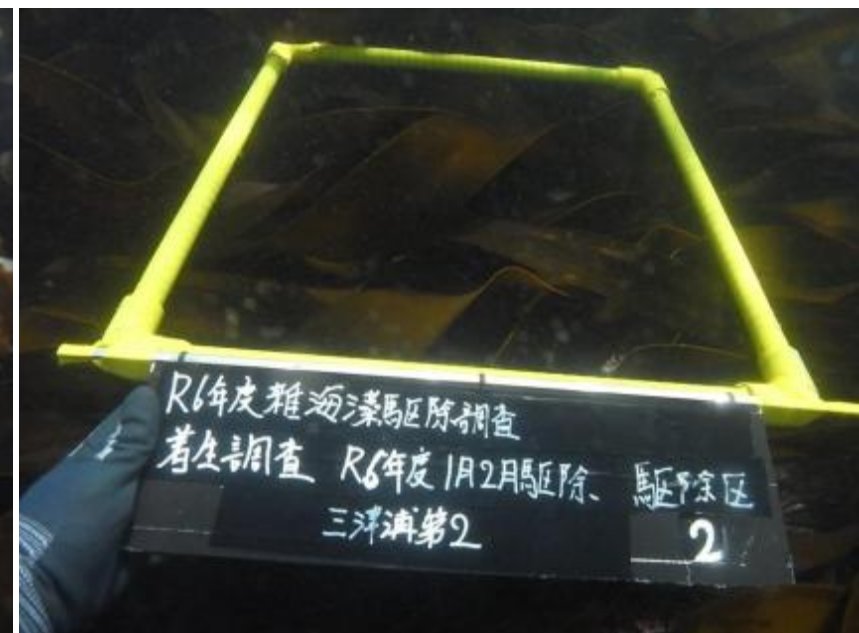
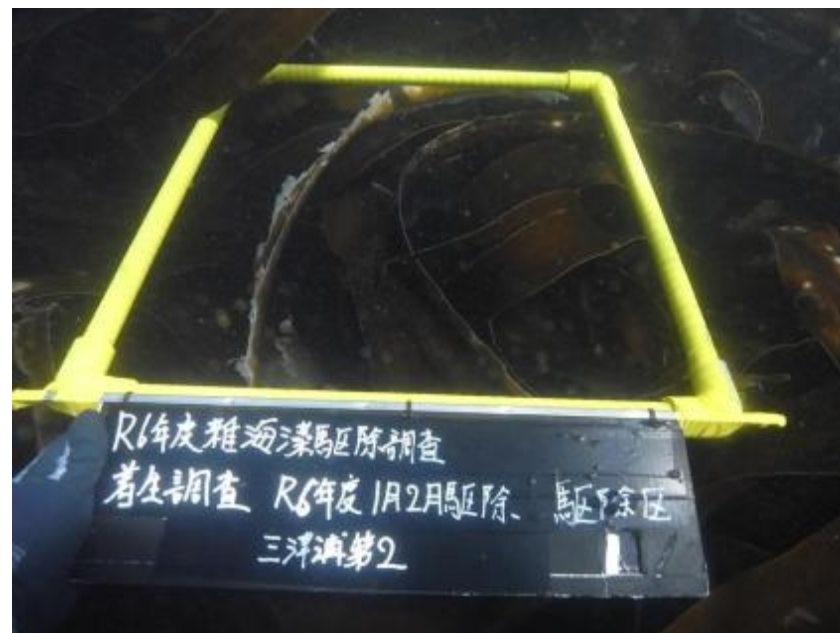
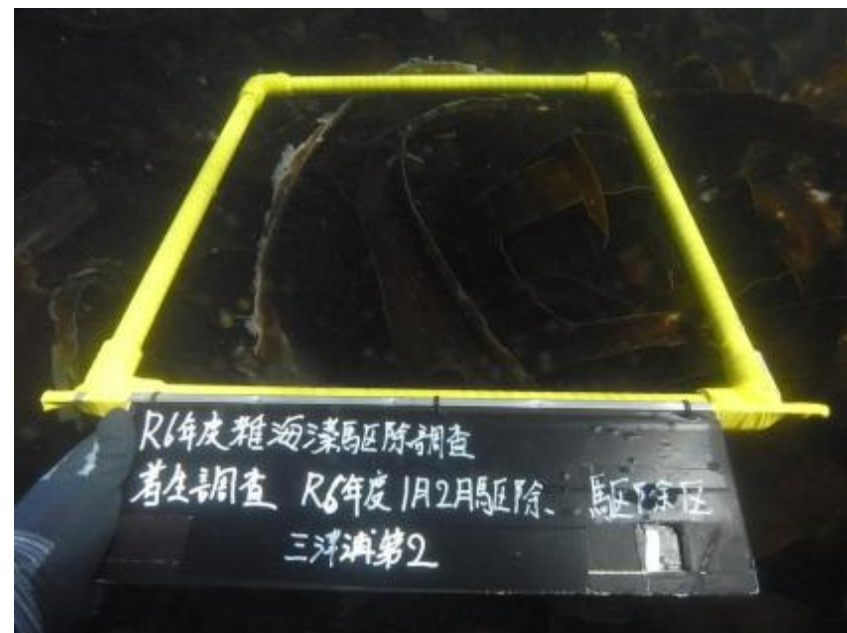


A=17,150m²

三津浦第2工区 駆除区 Before 2025.2.11



三津浦第2工区 駆除区 After 2025. 8.24



三津浦第2工区 対照区

面積:18,036m²

三津浦第2工区 対照区

N 42° 56.293'
E 144° 28.805'
X=-117644.540
Y=18454.352

N 42° 56.280'
E 144° 28.874'
X=-117687.485
Y=18548.299

育成調査実施位置①



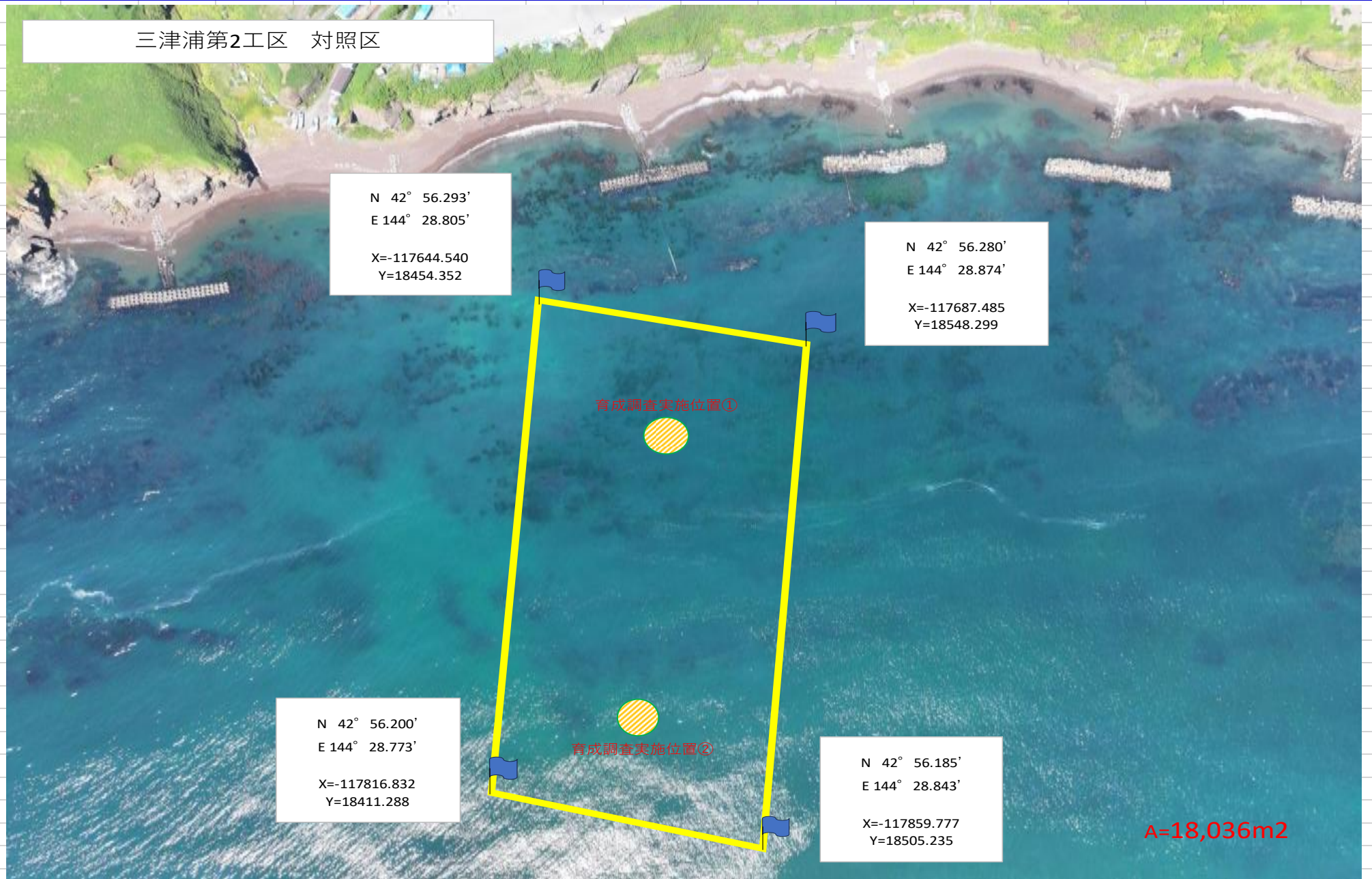
N 42° 56.200'
E 144° 28.773'
X=-117816.832
Y=18411.288

育成調査実施位置②

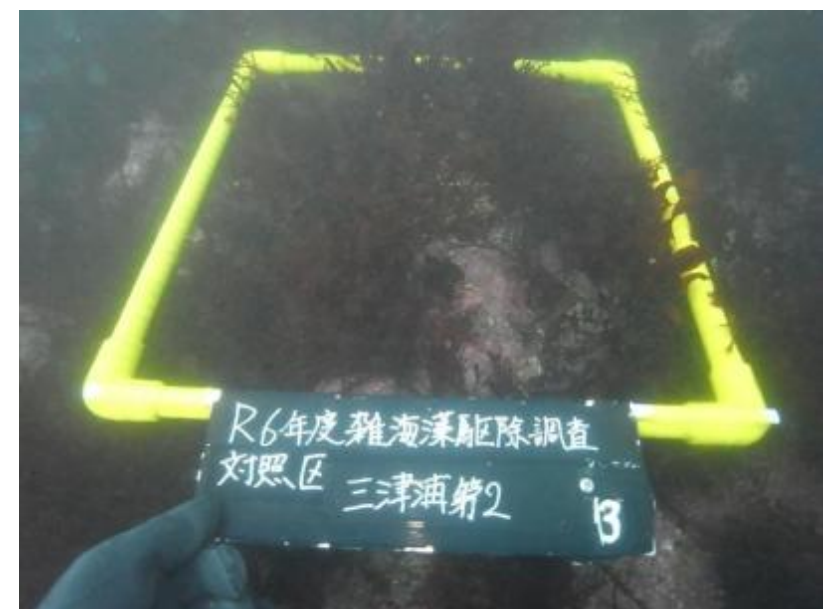
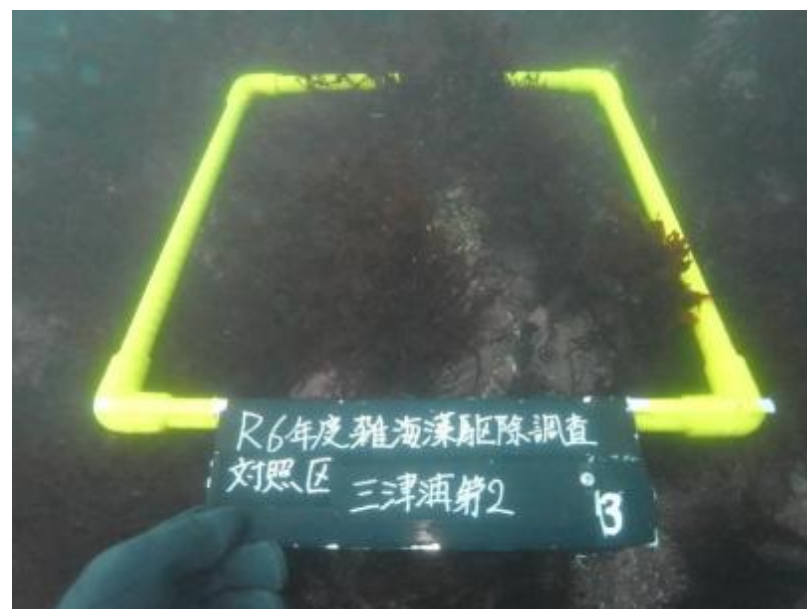
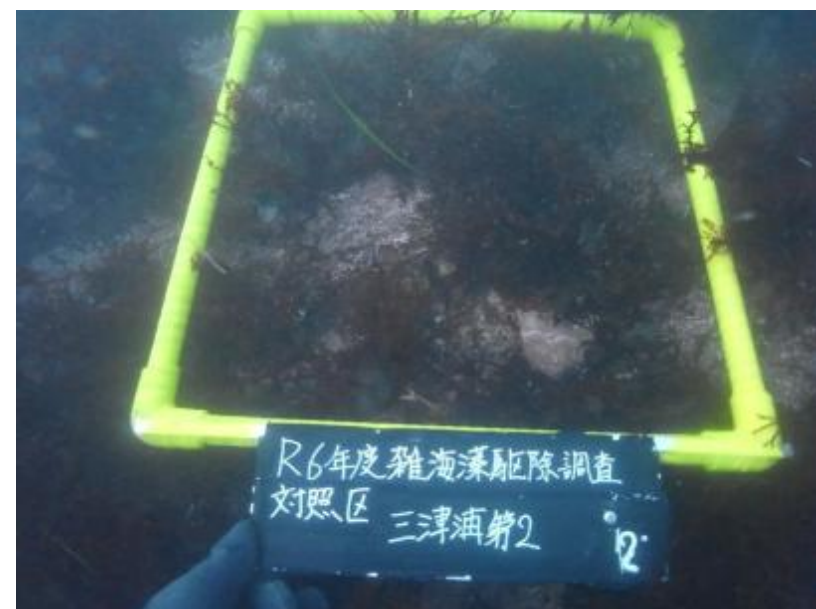
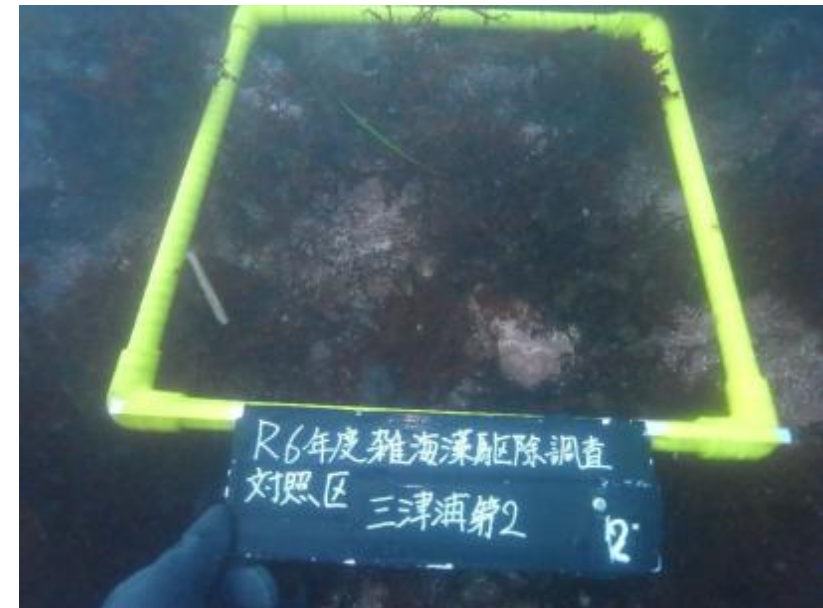
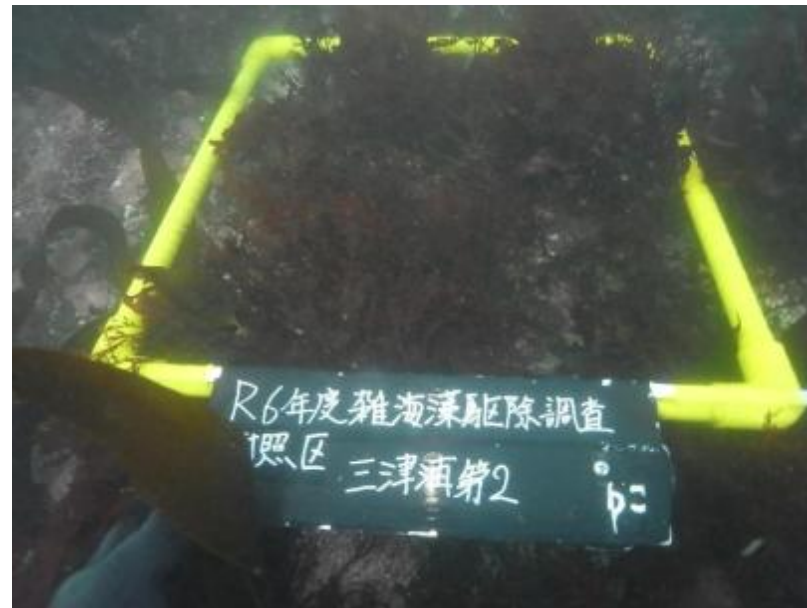
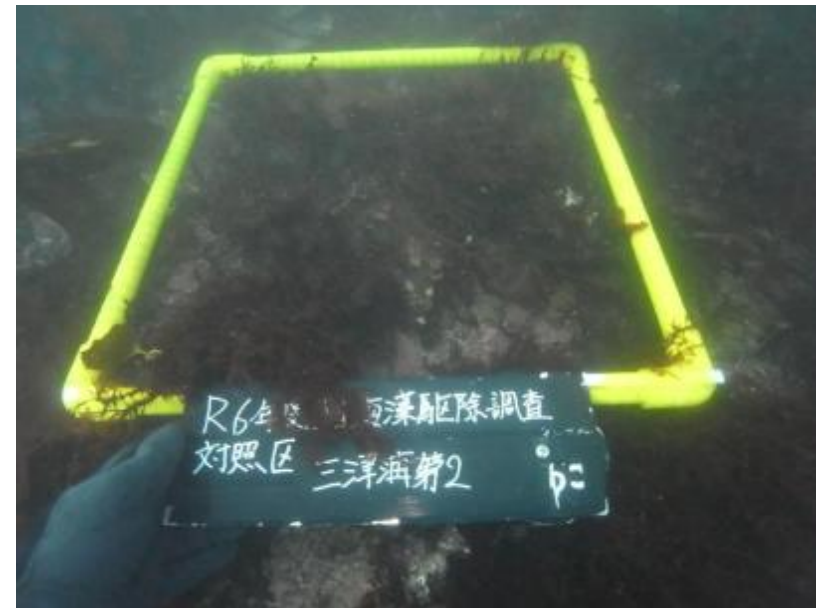


N 42° 56.185'
E 144° 28.843'
X=-117859.777
Y=18505.235

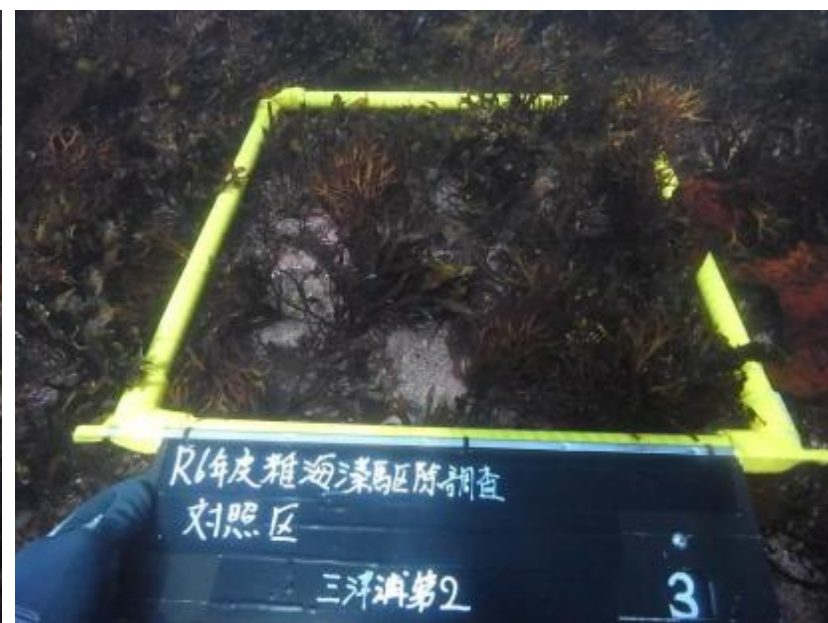
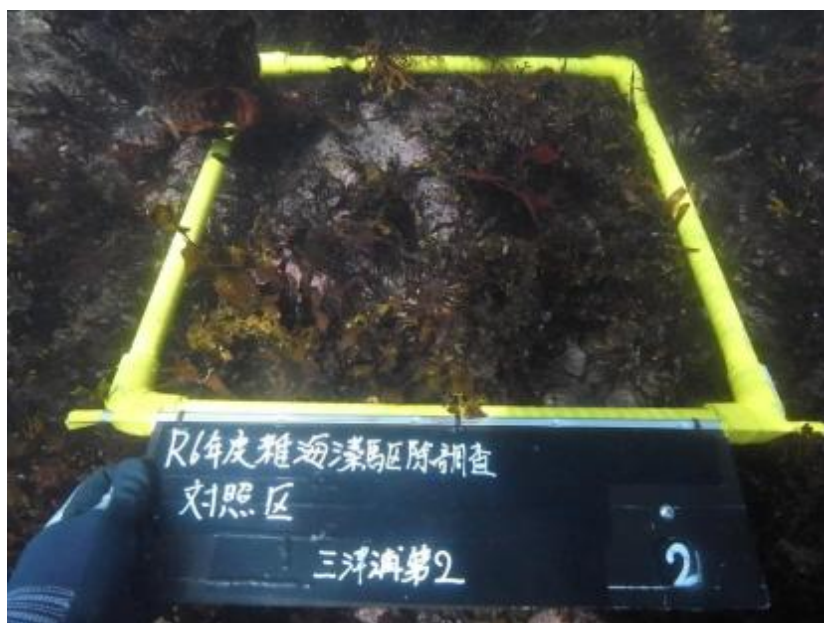
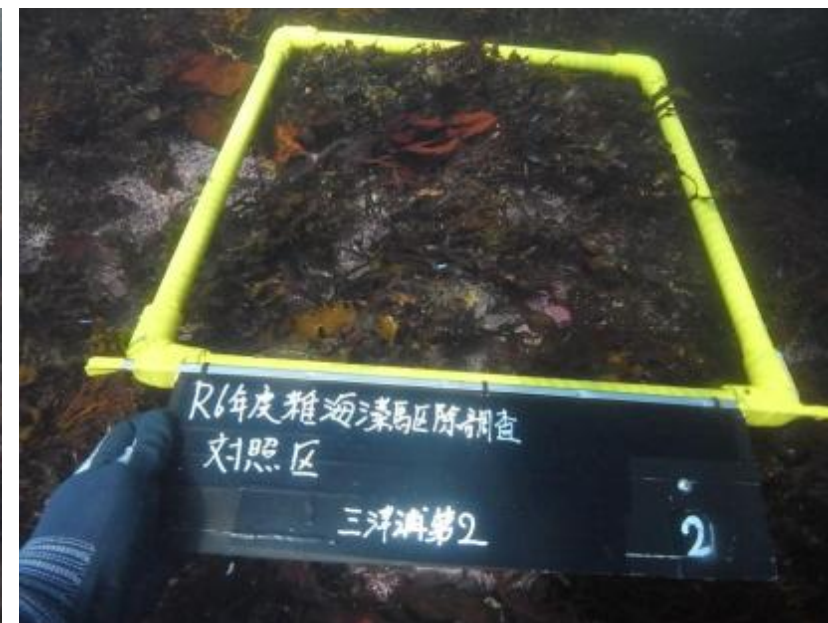
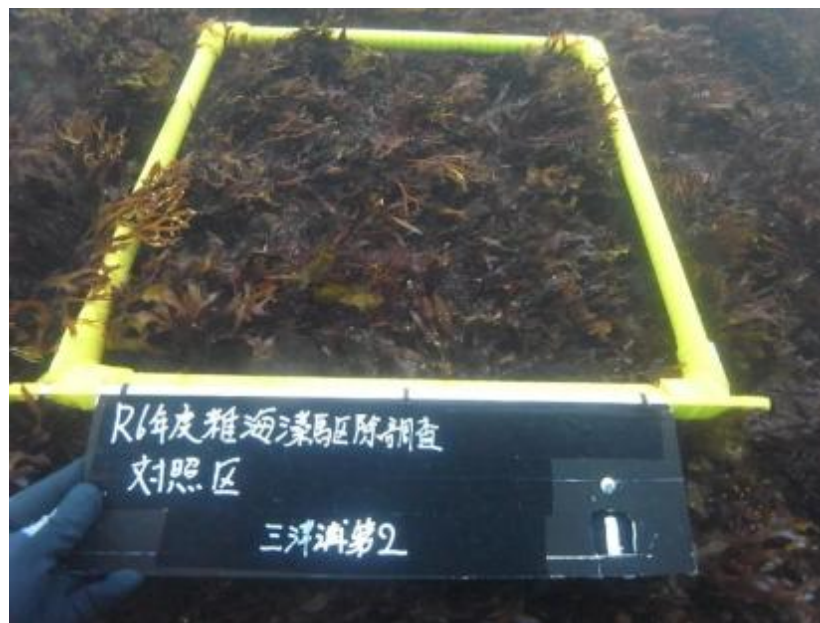
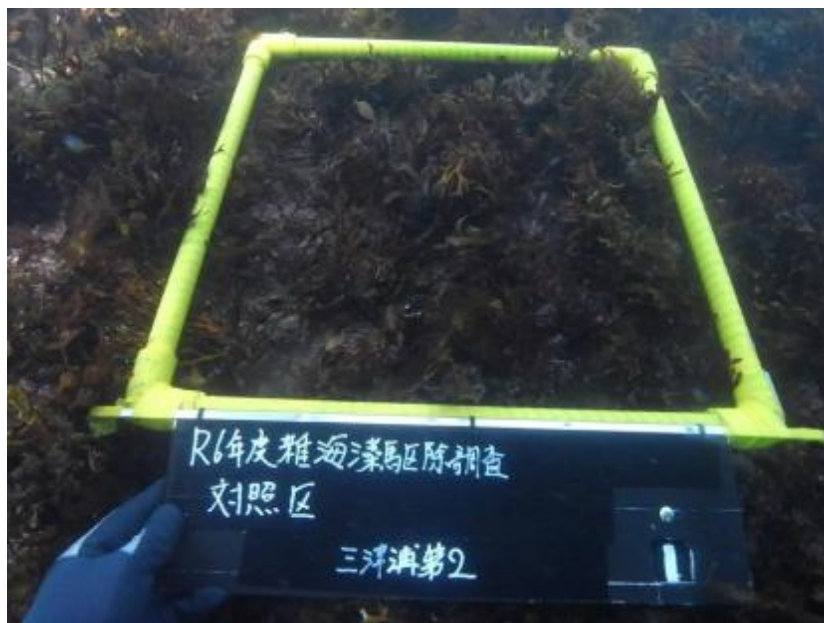
A=18,036m²



三津浦第2工区 对照区 Before 2025.2.11



三津浦第2工区 对照区 Before 2025. 2.11



興津益浦工区 駆除区

面積: 53,999m²

興津益浦工区 駆除区

N 42° 57.141'
E 144° 25.282'

X=-116370.145
Y=13982.800

N 42° 56.984'
E 144° 25.514'

X=-116376.176
Y=13975.763

育成調査実施位置①

育成調査実施位置②

N 42° 57.060'
E 144° 25.258'

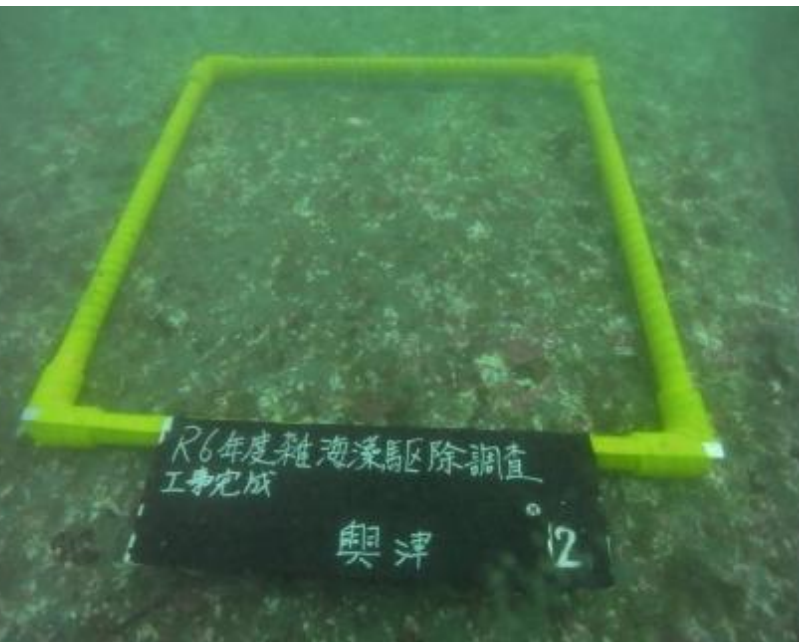
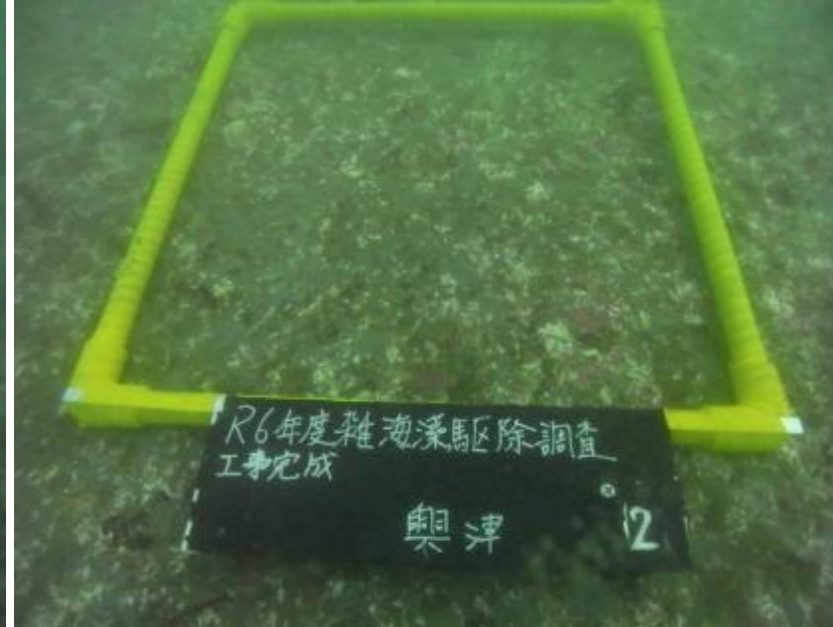
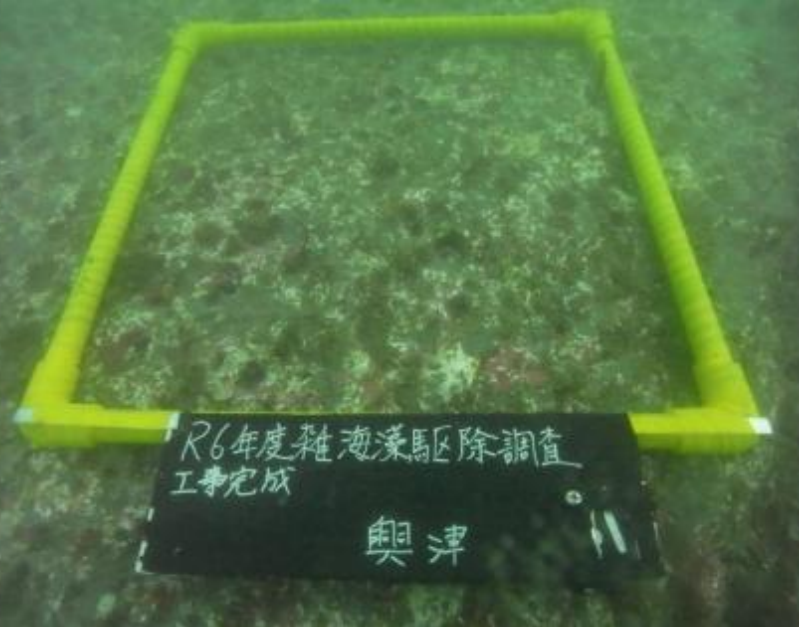
X=-116520.170
Y=13950.467

N 42° 56.903'
E 144° 25.490'

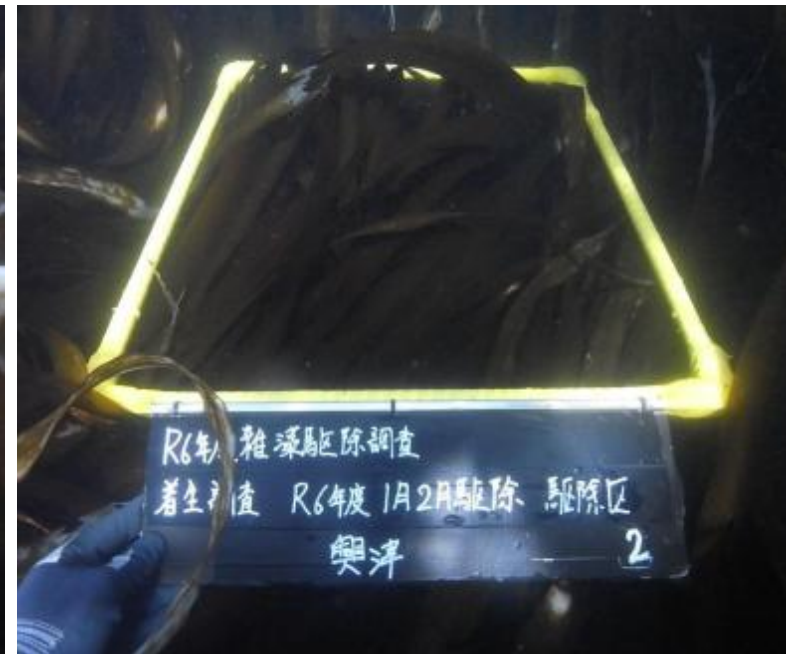
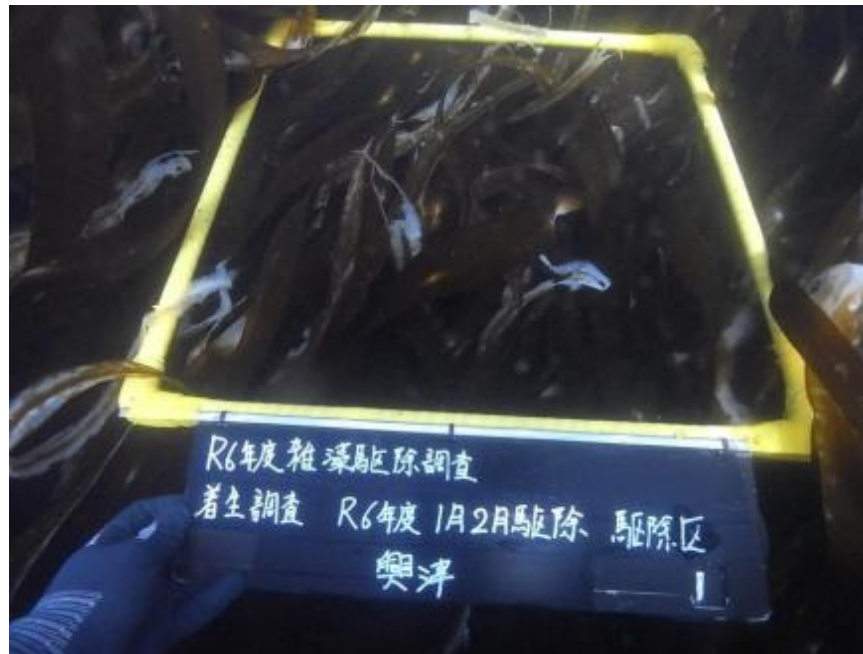
X=-116526.201
Y=13943.452

A=53,999m²

興津益浦工区 駆除区 Before 2025.2.16



興津益浦工区 駆除区 After 2025.8.24



興津益浦工区 対照区

面積: 52,804m²

興津益浦 工区 対照区

N 42° 57.235'
E 144° 25.027'

X=-115912.928
Y=13312.620

N 42° 57.146'
E 144° 25.258'

X=-116077.020
Y=13627.048

育成調査実施位置①

育成調査実施位置②

N 42° 57.181'
E 144° 24.968'

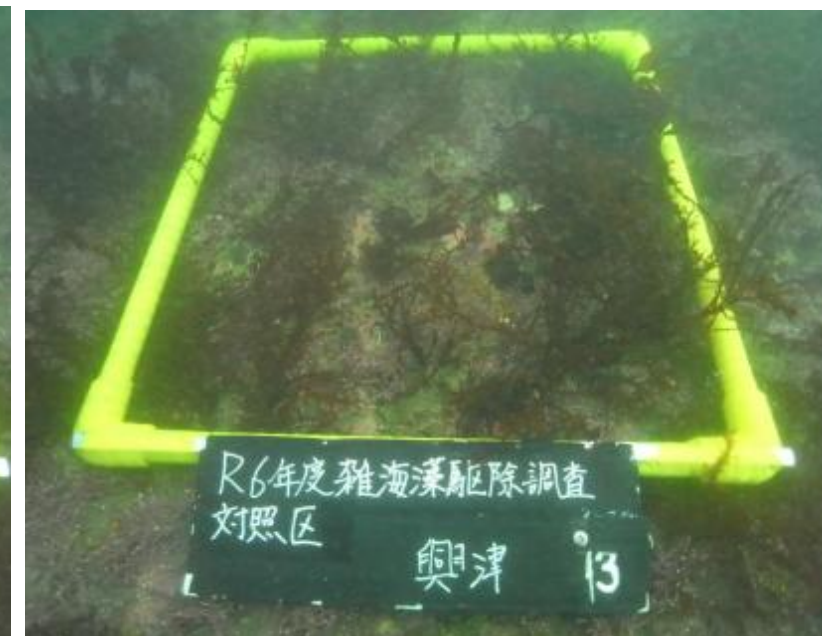
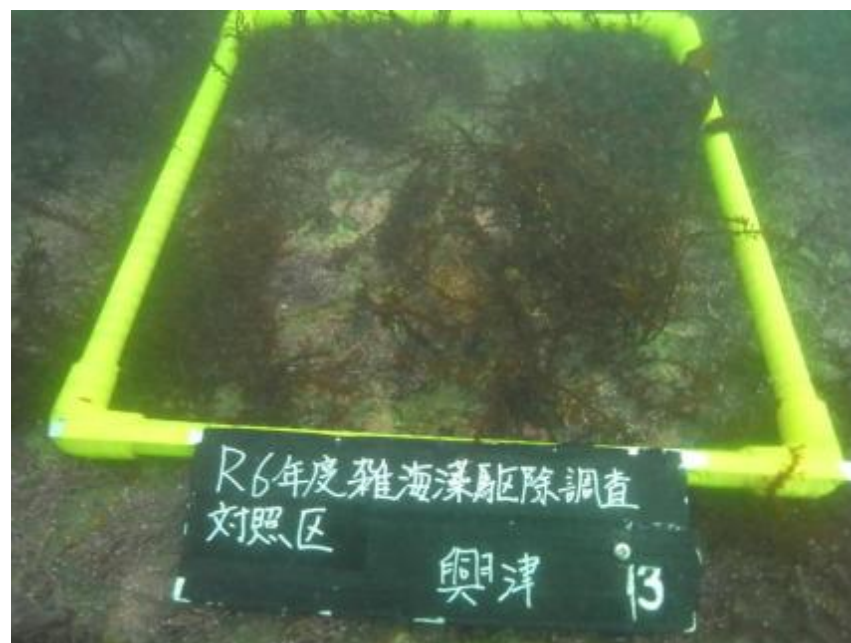
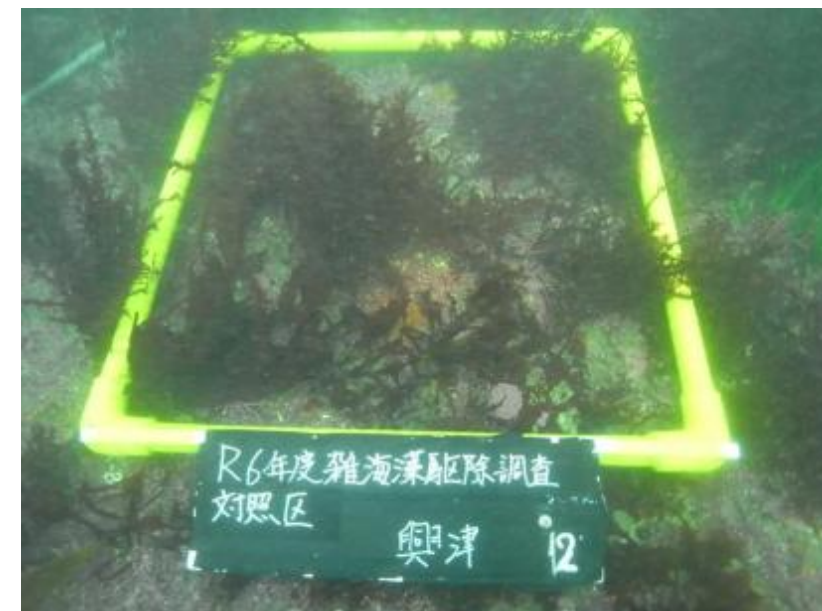
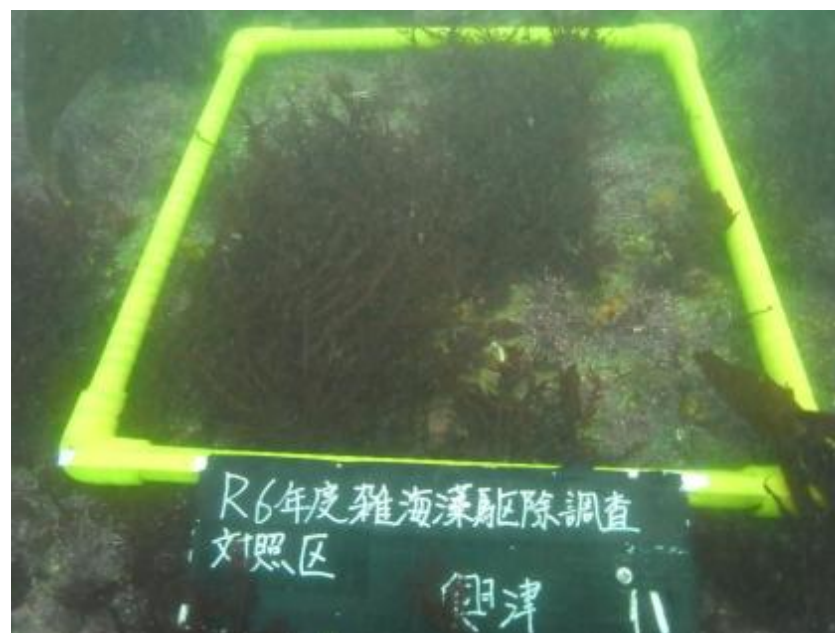
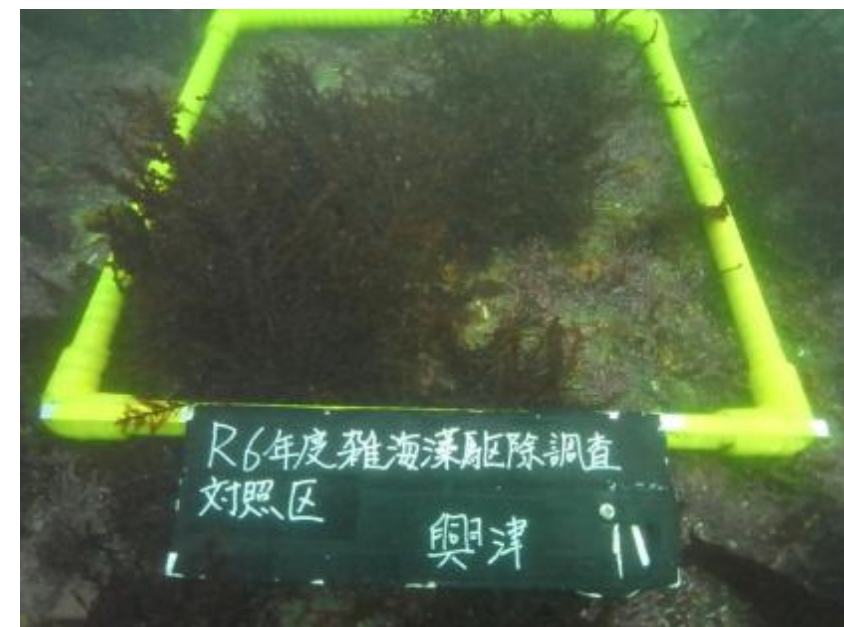
X=-116012.964
Y=13232.469

N 42° 57.065'
E 144° 25.237'

X=-116227.035
Y=13598.810

A=52,804m²

興津益浦工区 対照区 Before 2025.2.16



興津益浦工区 対照区 After 2025. 8.24

