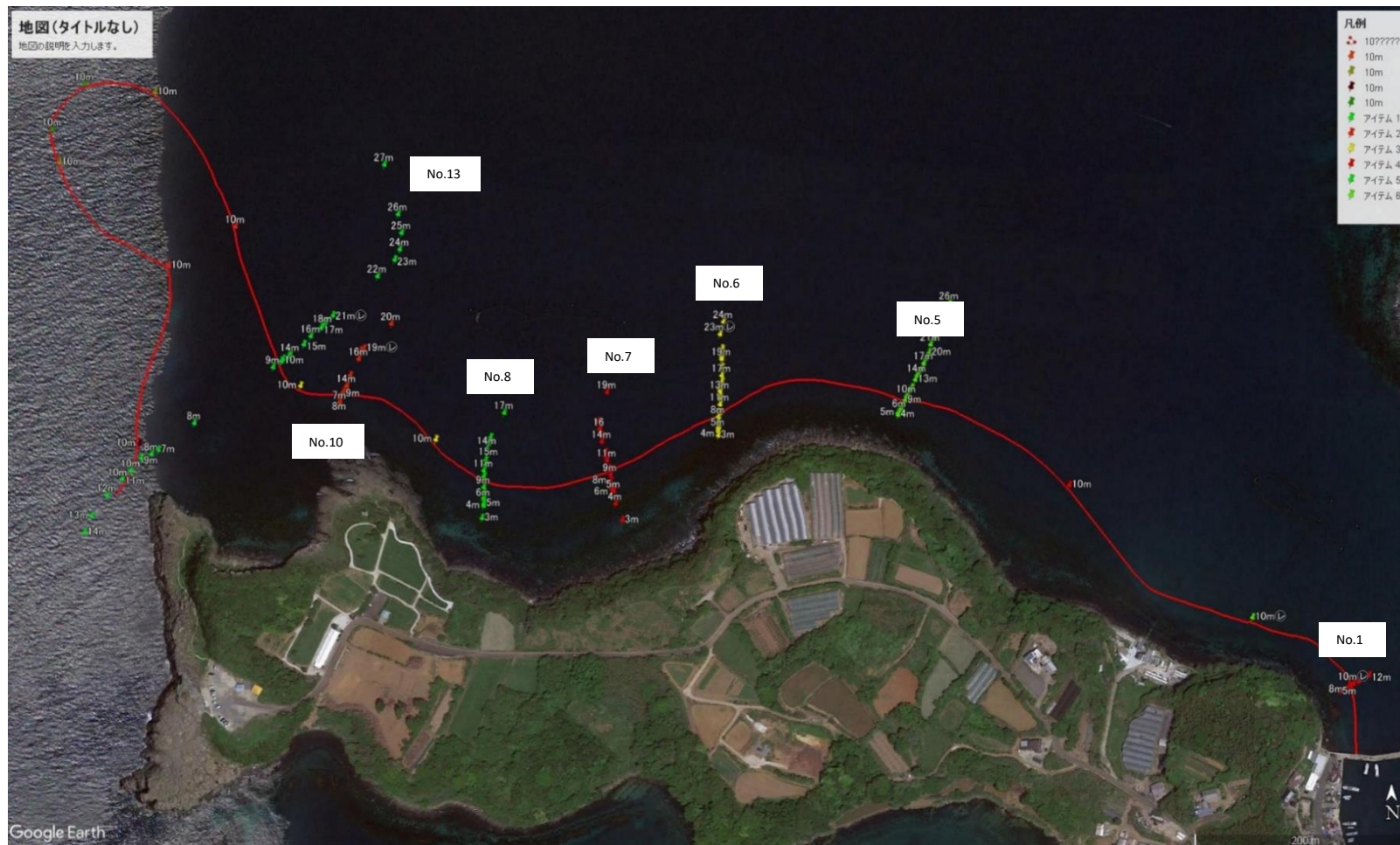
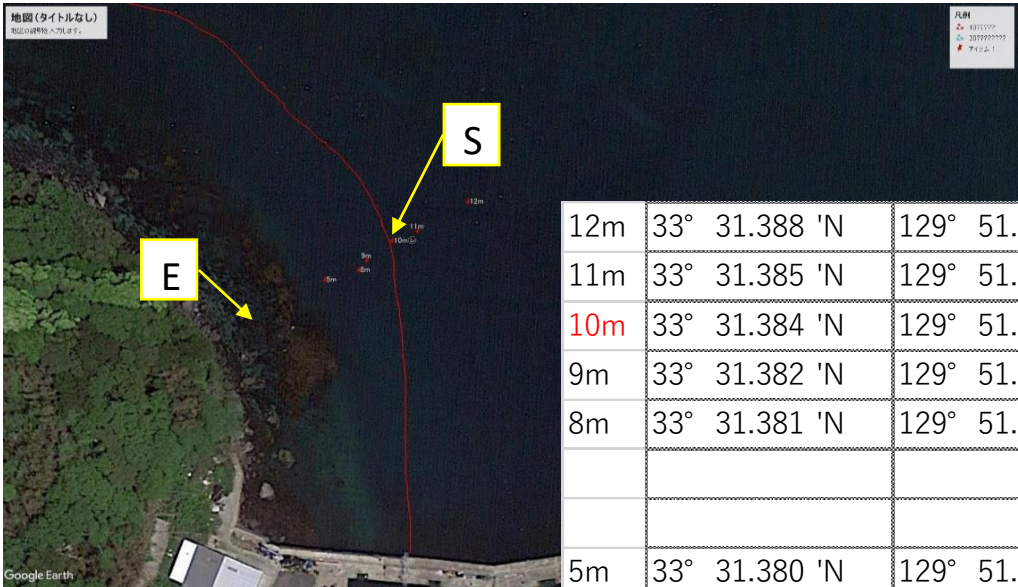
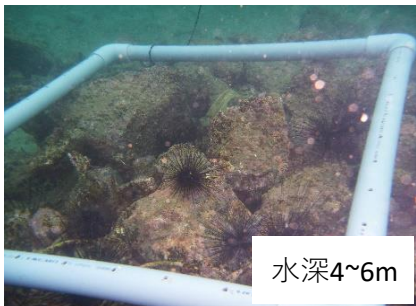
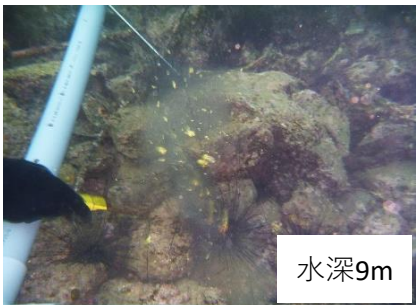
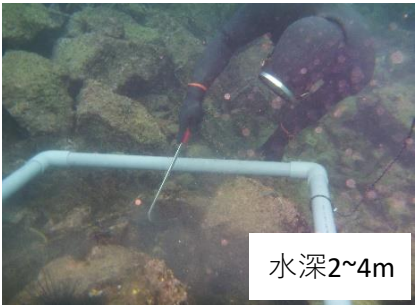
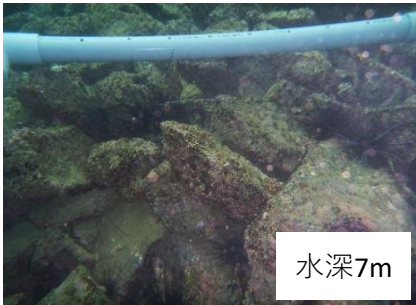


活動範圍：水深10m

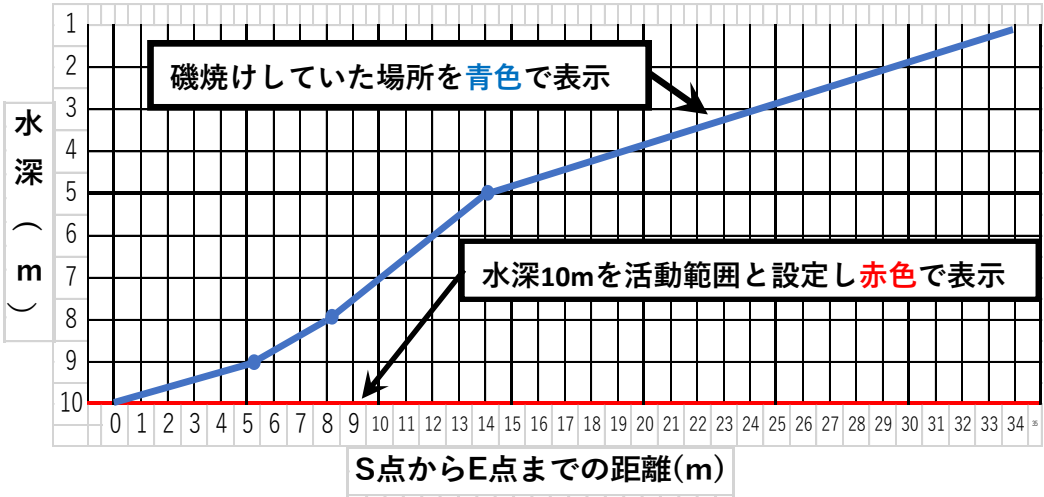


No.01 2011年1月15日調査

添付資料 7 - 1

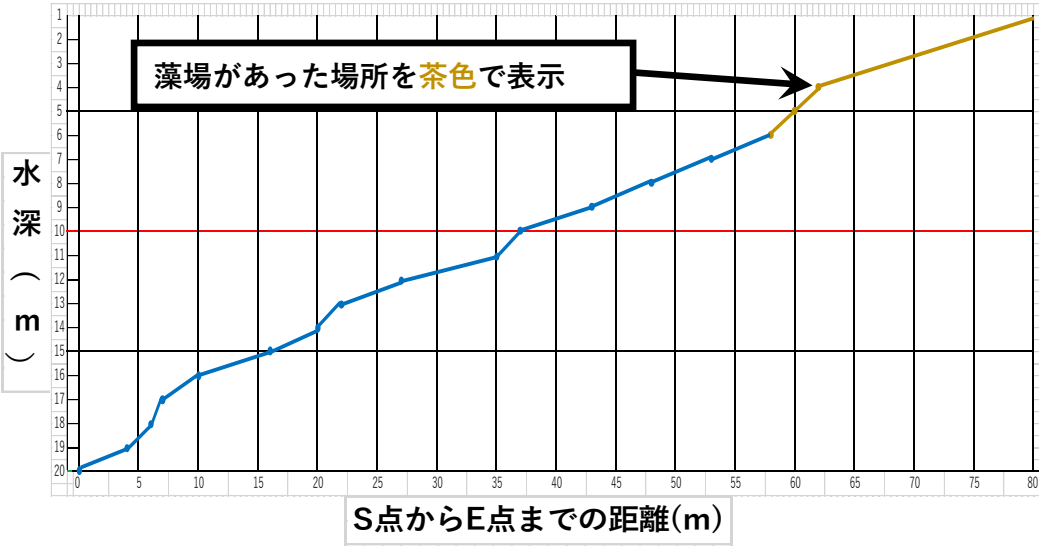
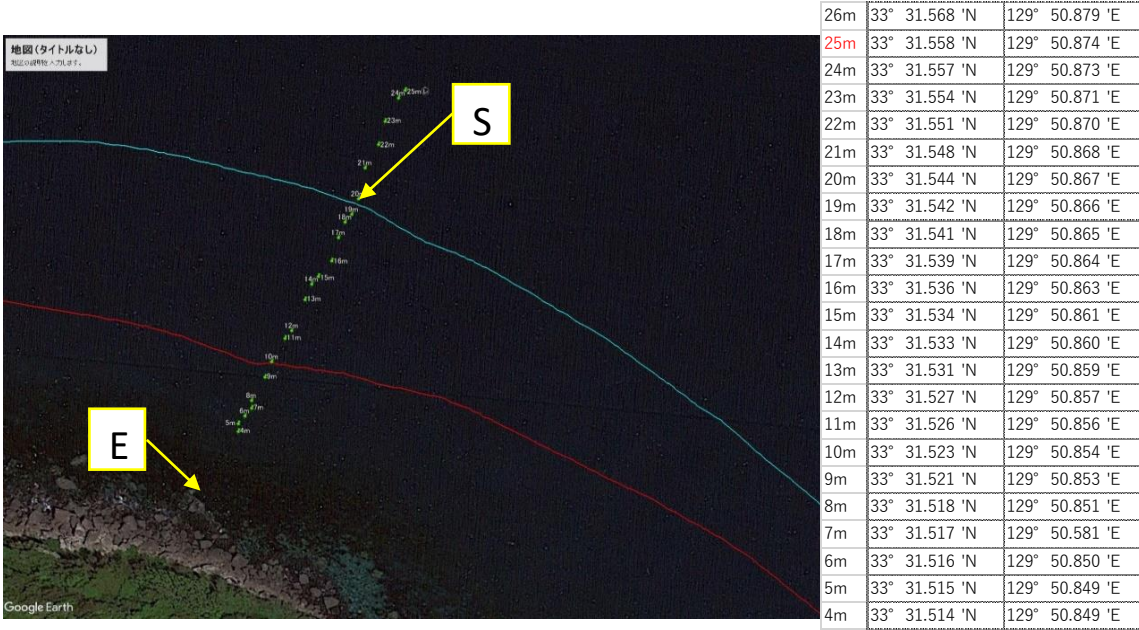
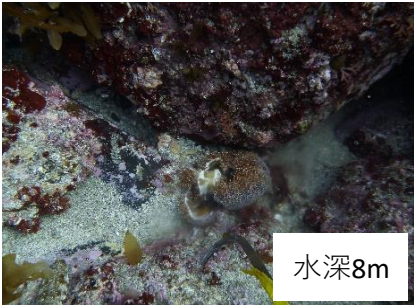
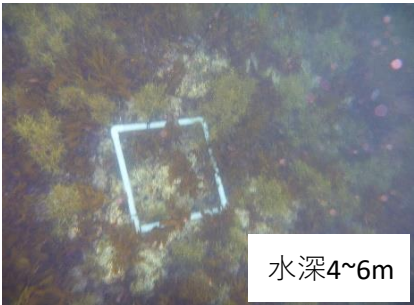
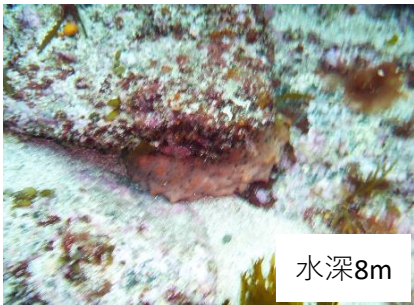
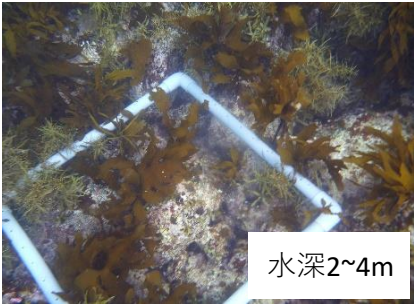
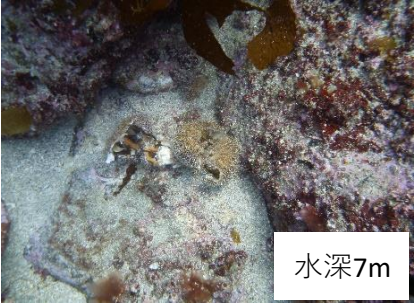


12m	33° 31.388 'N	129° 51.124 'E
11m	33° 31.385 'N	129° 51.118 'E
10m	33° 31.384 'N	129° 51.115 'E
9m	33° 31.382 'N	129° 51.112 'E
8m	33° 31.381 'N	129° 51.111 'E
5m	33° 31.380 'N	129° 51.107 'E



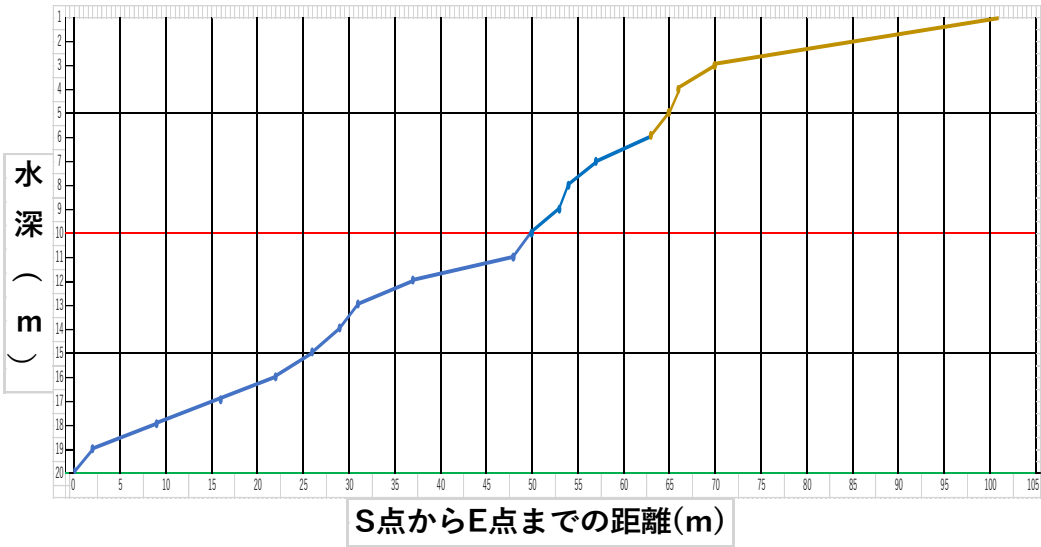
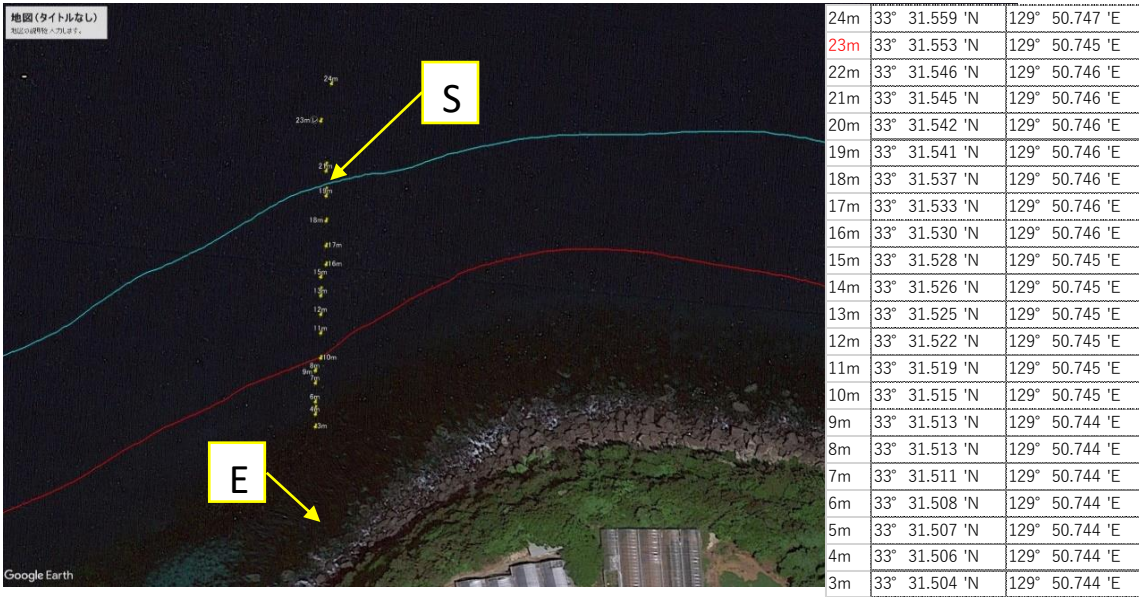
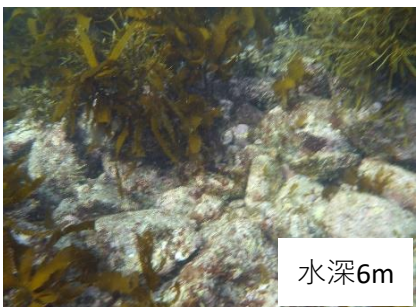
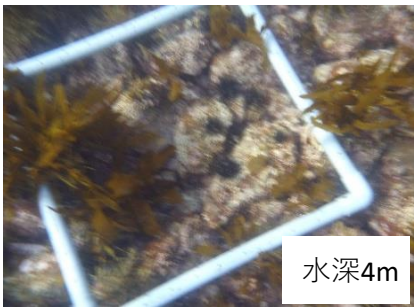
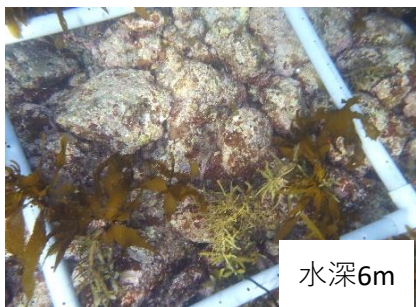
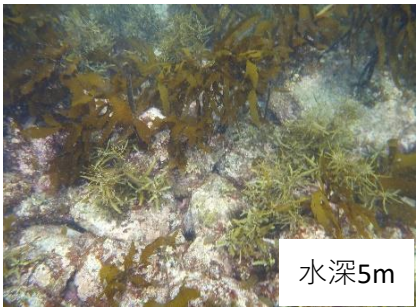
添付資料 7 - 2

No.05 2011年3月22日調査

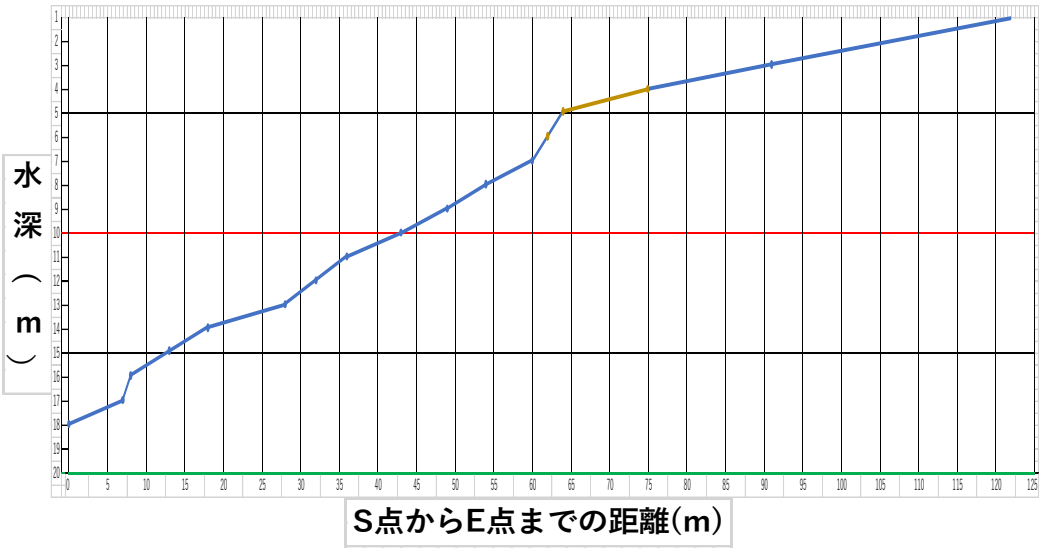
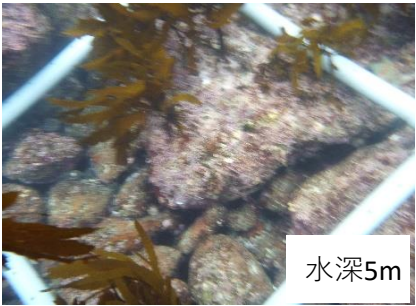
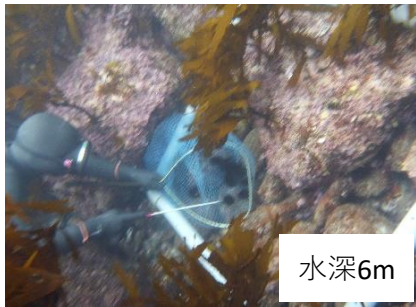
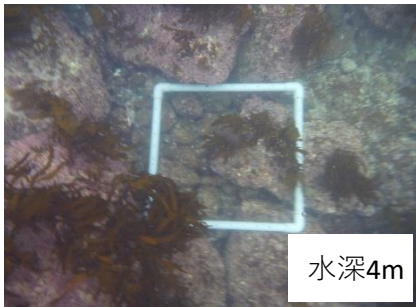
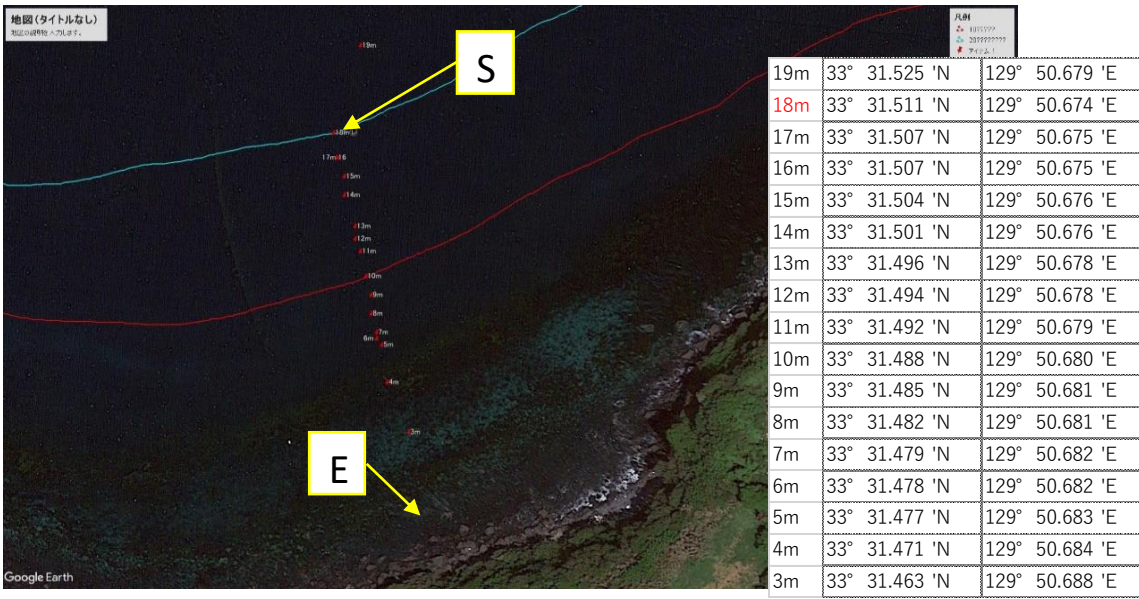


No.06 2011年3月14日調査

添付資料 7 - 3

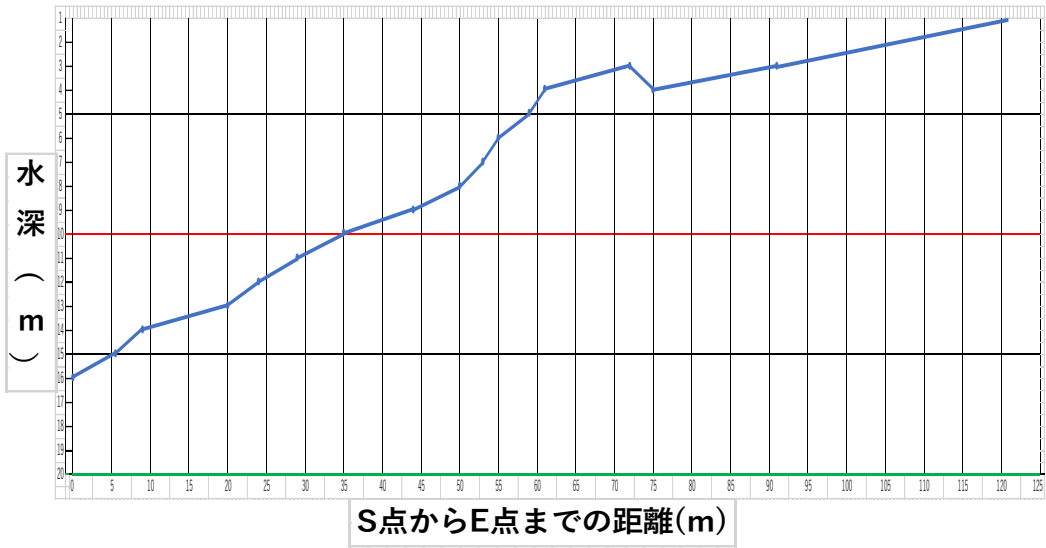
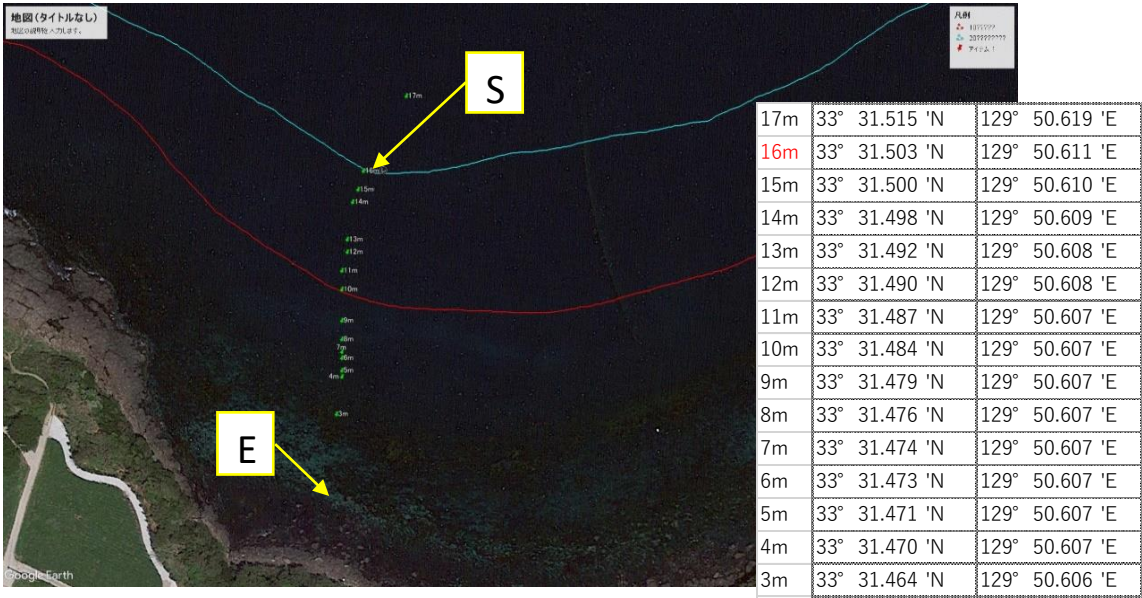
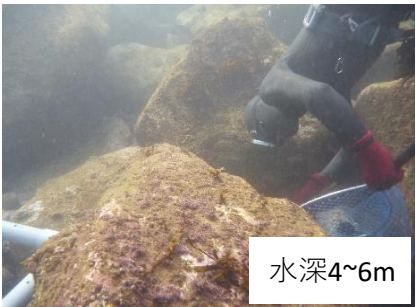
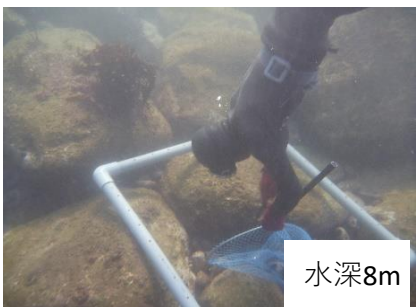
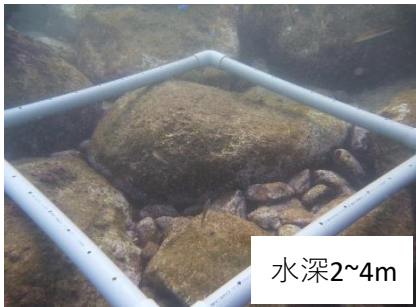
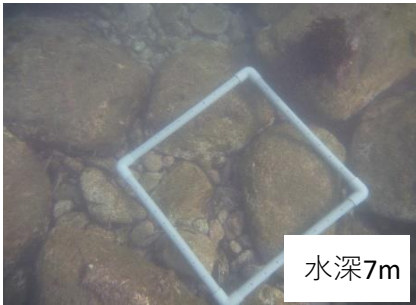


No.07 2011年9月7日調査

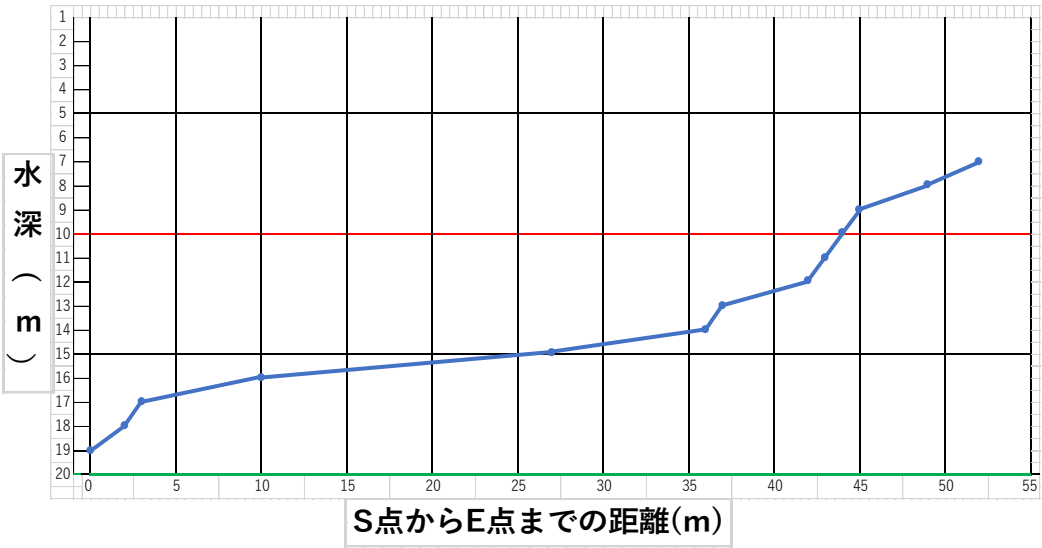
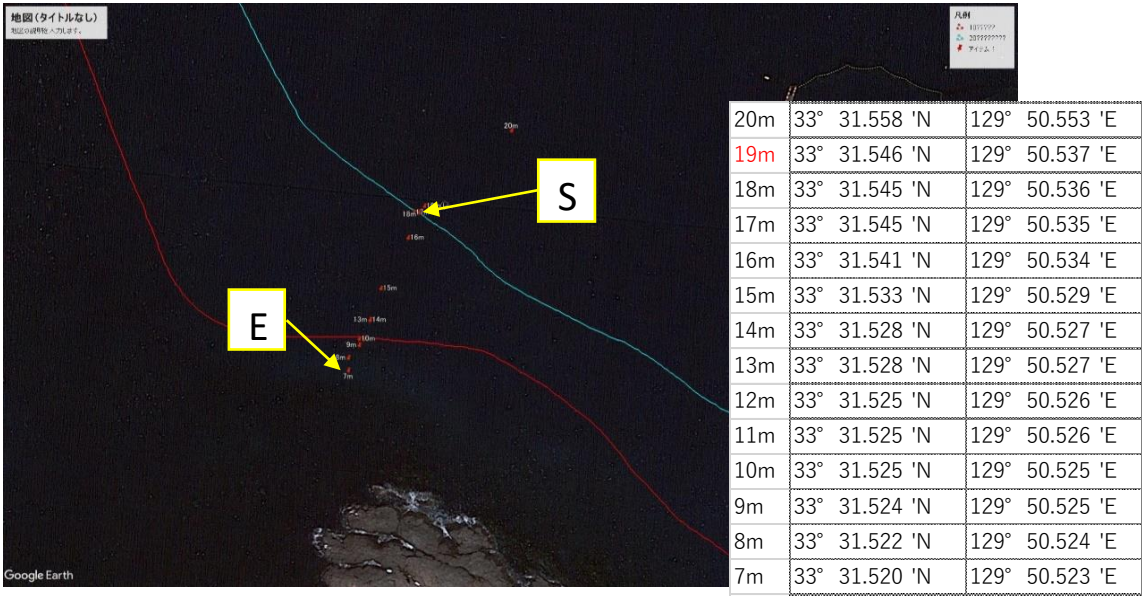
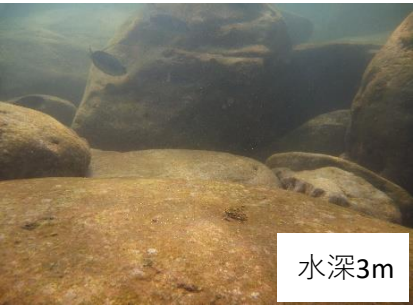
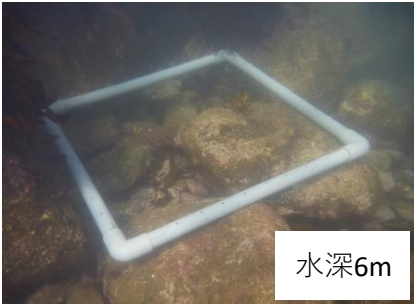
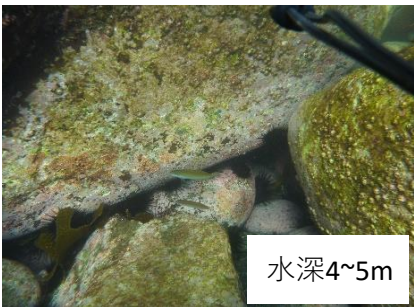


No.08 2011年10月26日調査

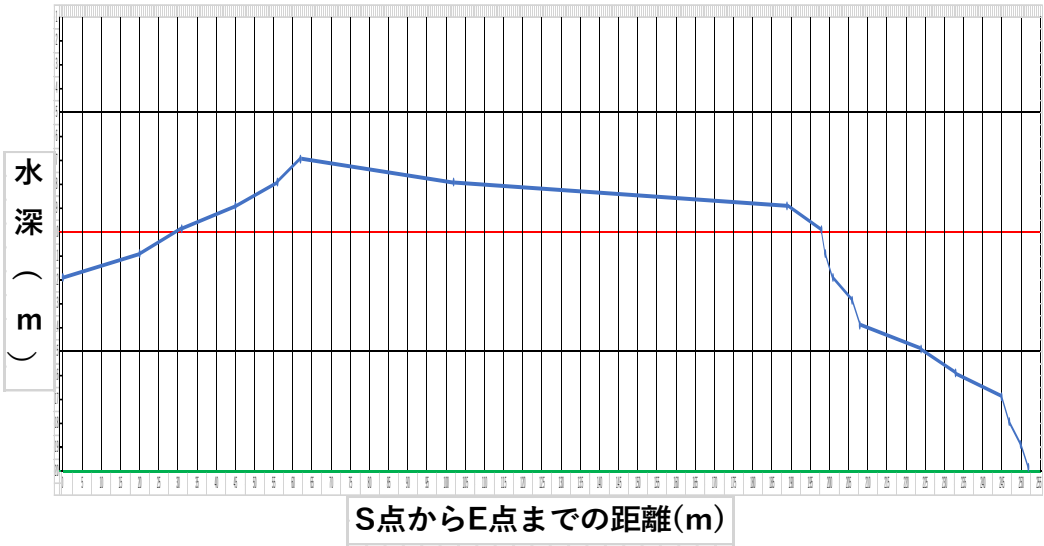
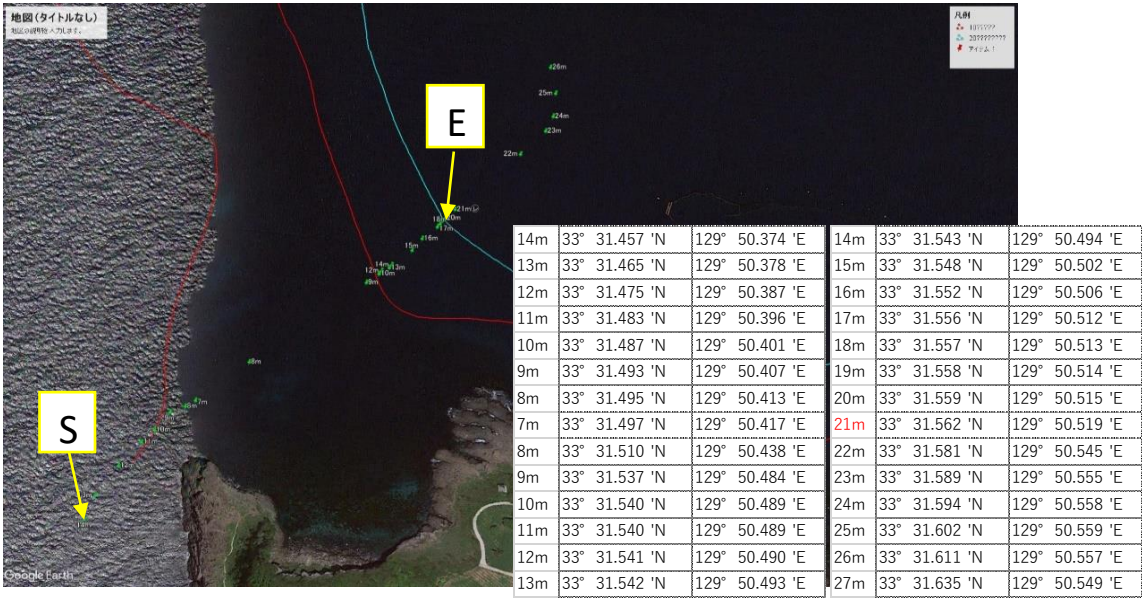
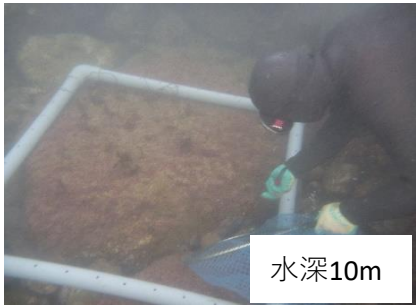
添付資料 7 - 5



No.10 2012年2月14日調査



No.13 2011年11月5日調査



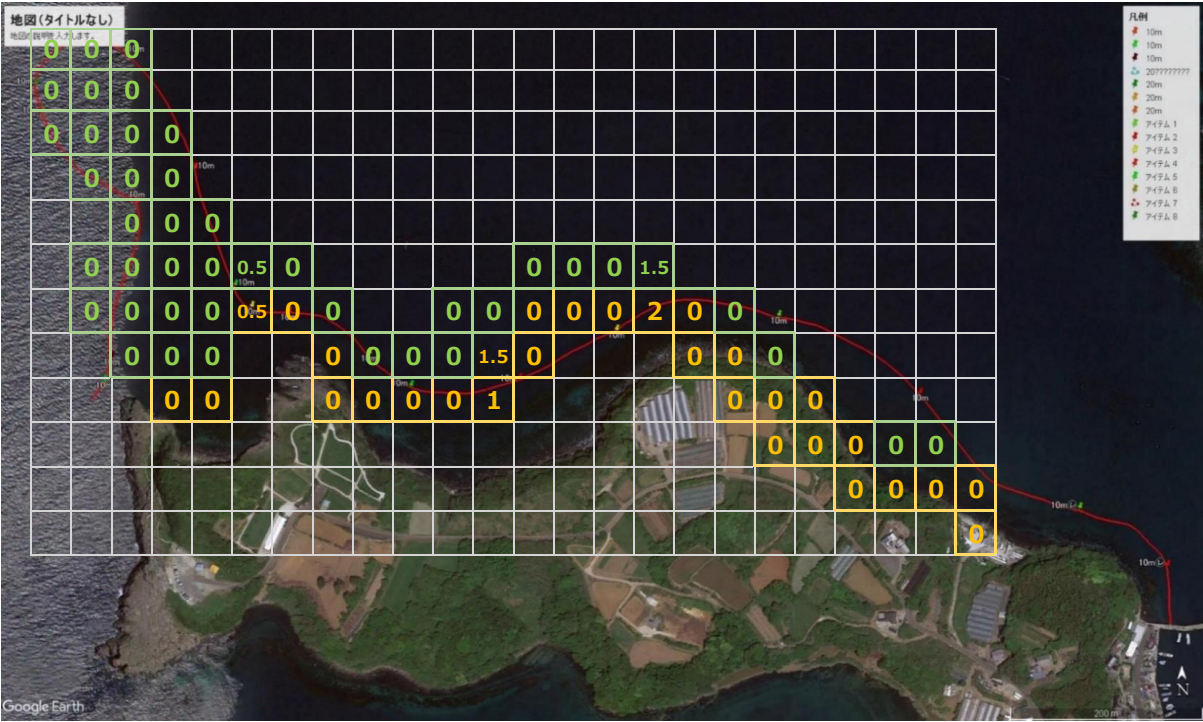
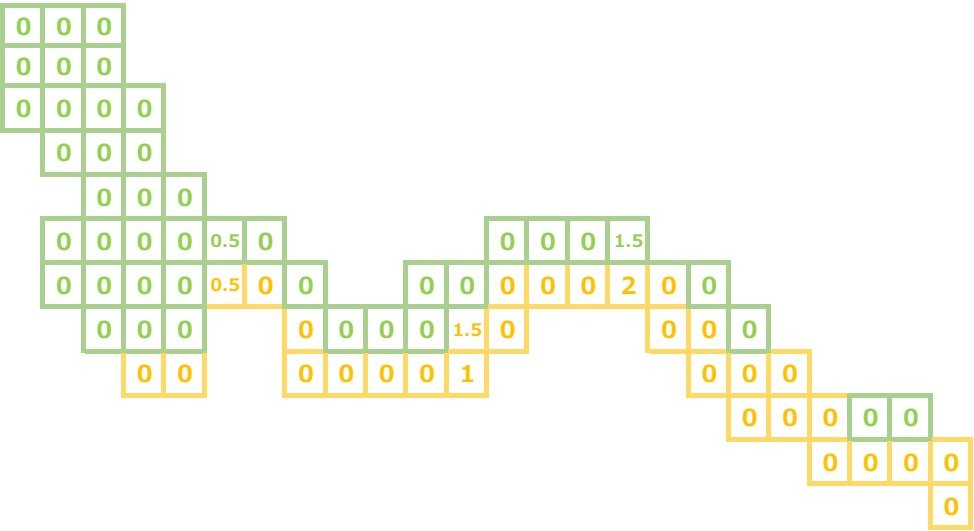
		被度点数	ha変換 (被度点数/20)	面積確実性評価	吸収割合(ha)		吸収割合80% (t CO2/ha/年)		吸収量 (t CO2/年)	吸収量合計 (t CO2/年)
全体被度		7	0.35ha	85%	ガラモ場	アラメ場	ガラモ場	アラメ場	0.46	1.31
被度割合	ガラモ場30:アラメ場70	2	0.1ha	0.08ha	0.02	0.07	0.07	0.39	0.46	
	ガラモ場80:アラメ場20	5	0.25ha	0.21ha	0.16	0.05	0.57	0.28	0.85	

※グリッド線は1辺50m

※日本全国平均吸収係数からガラモ場：4.5t CO2/ha/年、アラメ場：7.0t CO2/ha/年に設定。

ガラモ場 2.7-5.1

アラメ場 4.2-7.9



対照区航跡

添付資料 9

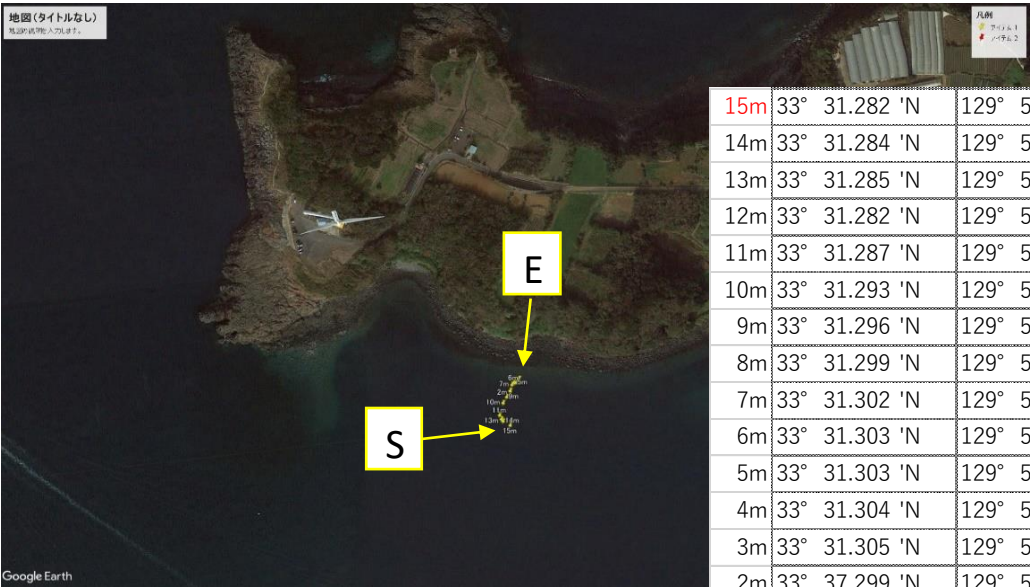
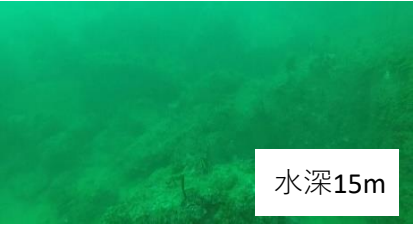




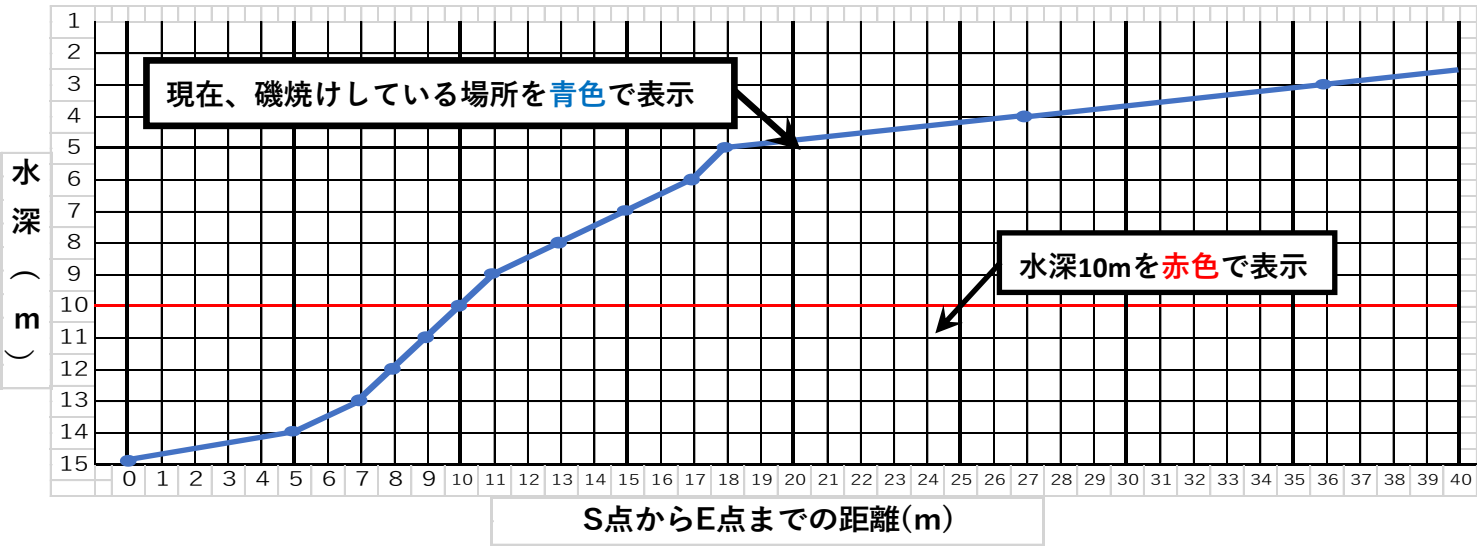
対照区No.01

2022/9/13調査

添付資料 1 0 - 1



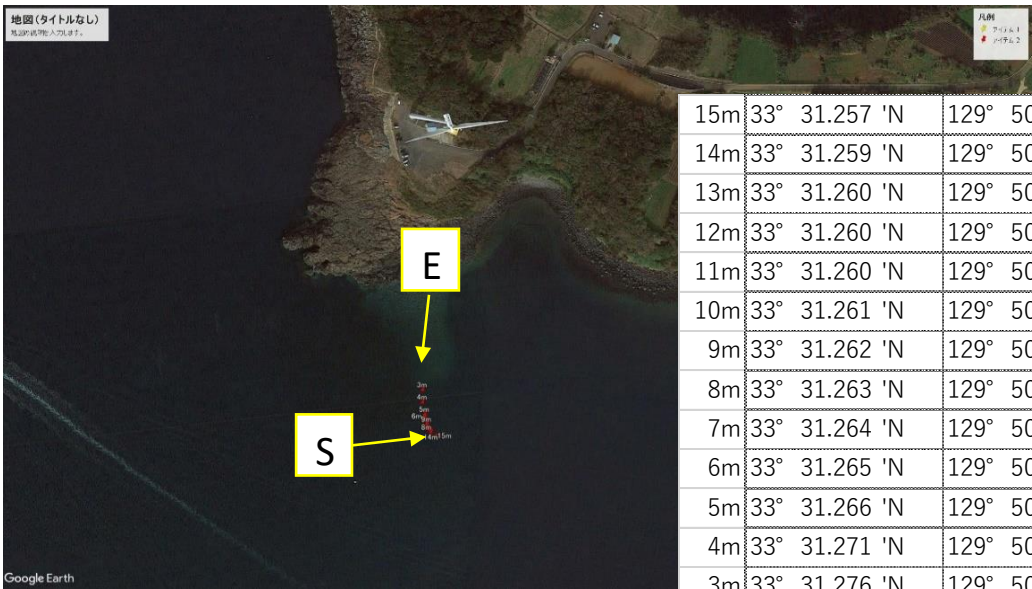
15m	33° 31.282 'N	129° 50.571 'E
14m	33° 31.284 'N	129° 50.567 'E
13m	33° 31.285 'N	129° 50.566 'E
12m	33° 31.282 'N	129° 51.112 'E
11m	33° 31.287 'N	129° 50.565 'E
10m	33° 31.293 'N	129° 50.567 'E
9m	33° 31.296 'N	129° 50.569 'E
8m	33° 31.299 'N	129° 50.571 'E
7m	33° 31.302 'N	129° 50.572 'E
6m	33° 31.303 'N	129° 50.573 'E
5m	33° 31.303 'N	129° 50.574 'E
4m	33° 31.304 'N	129° 50.575 'E
3m	33° 31.305 'N	129° 50.576 'E
2m	33° 37.299 'N	129° 50.571 'E



対照区No.02

2022/9/13調査

添付資料 1 0 - 2



15m	33° 31.257 'N	129° 50.466 'E
14m	33° 31.259 'N	129° 50.464 'E
13m	33° 31.260 'N	129° 50.463 'E
12m	33° 31.260 'N	129° 50.463 'E
11m	33° 31.260 'N	129° 50.463 'E
10m	33° 31.261 'N	129° 50.462 'E
9m	33° 31.262 'N	129° 50.462 'E
8m	33° 31.263 'N	129° 50.462 'E
7m	33° 31.264 'N	129° 50.461 'E
6m	33° 31.265 'N	129° 50.461 'E
5m	33° 31.266 'N	129° 50.461 'E
4m	33° 31.271 'N	129° 50.460 'E
3m	33° 31.276 'N	129° 50.460 'E

